

Model Name: GA-B150M-D2VX-SI

rev 1.01



SHEET

TITLE

SHEET

TITLE

01	COVER SHEET
02	BOM & PCB MODIFY HISTORY
03	BLOCK DIAGRAM
04	CPU_LGA1151-A
05	CPU_LGA1151-B-DDR4
06	CPU_LGA1151-C
07	CPU_LGA1150-D
08	DDR3 CHANNEL A
09	DDR3 CHANNEL B
10	PCH_CLK BUFFER
11	PCH_DMI,USB,PCIE
12	PCH_MISC
13	PCH SATA,PCIE,SATA_EXPRESS
14	PCH_PWR,GND
15	Dual BIOS
16	ITE 8628 LPC IO
17	HWM
18	FAN CTRL--SIO
19	PCI EXPRESS*16 SLOT
20	PCI EXPRESS*1 SLOT
21	M.2X4
22	SATA EXPRESS
23	IT8892 PCI BRIDGE
24	PCI SLOT
25	ISL95858_856 PWM
26	ISL95858_856 MOS_VCORE
27	ISL95858_856 MOS_VCCGT

28	
29	VCCSA_VCCIO_VCCPLL
30	RT8120_DDR_VDDQ
31	
32	RT8120_PCH_VCC1_0_PCH
33	DISCRETE POWER
34	NCT3933
35	ATX POWER , A_-PROCHOT
36	KB_MS_USB
37	DVI CONN
38	RTD2168 - DP to VGA - IC
39	RTD2168 - DP to VGA - Conn
40	
41	R_USB30
42	REALTEK - RTL8111G
43	USB30_LAN CONNECTOR-RTL8111G
44	Realtek ALC887
45	REAR AUDIO JACK
46	F_USB30
47	F_USB
48	COM , LPT , TPM
49	F_PANEL
50	TABLE LIST
51	POWER MAP

Gigabyte Technology

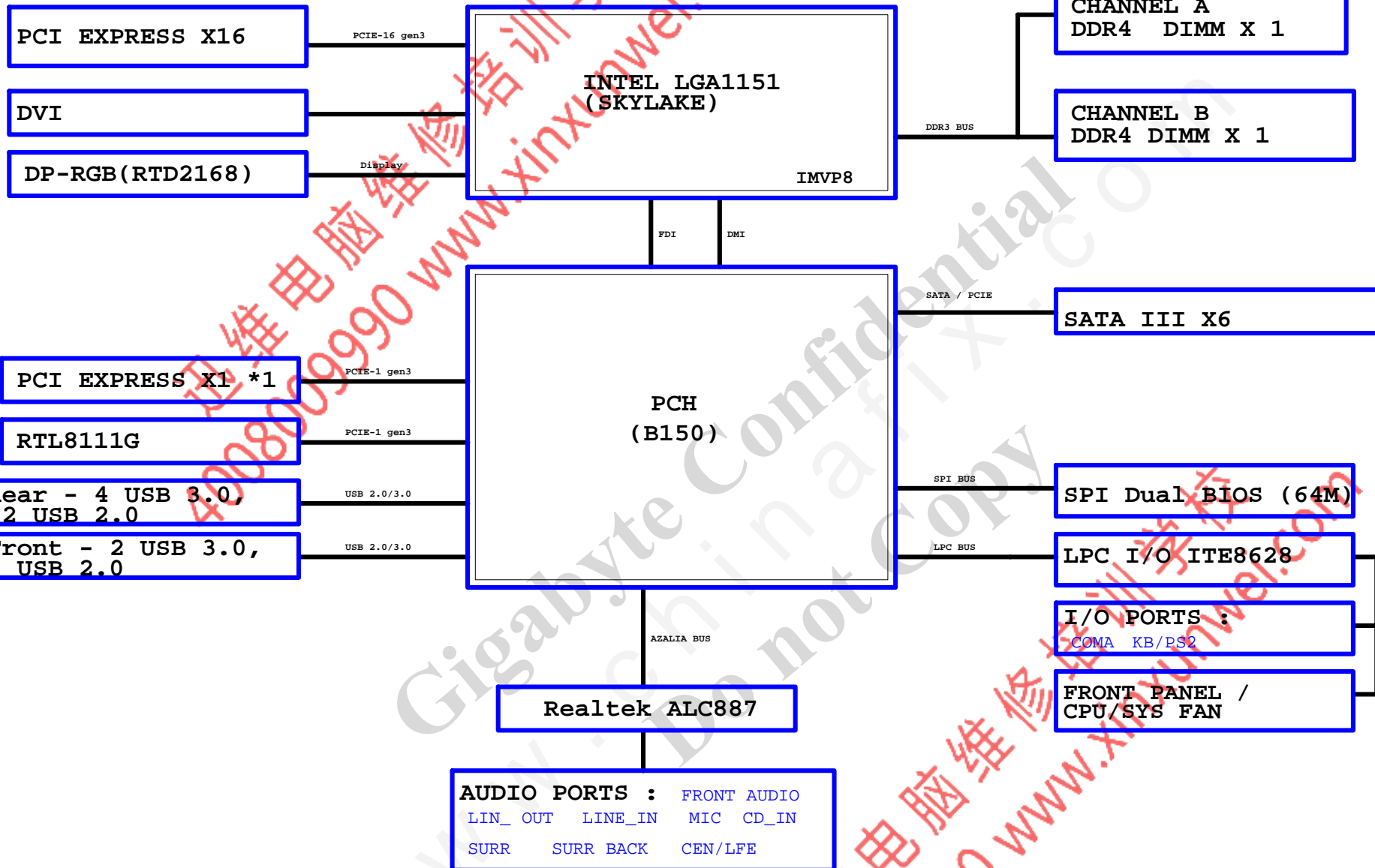
Title		
Cover Sheet		
Size	Document Number	Rev
Custom	GA-B150M-D2VX-SI	1.01
Date:	Thursday, January 07, 2016	Sheet 1 of 50

Circuit or PCB layout change

[illegible][illegible]

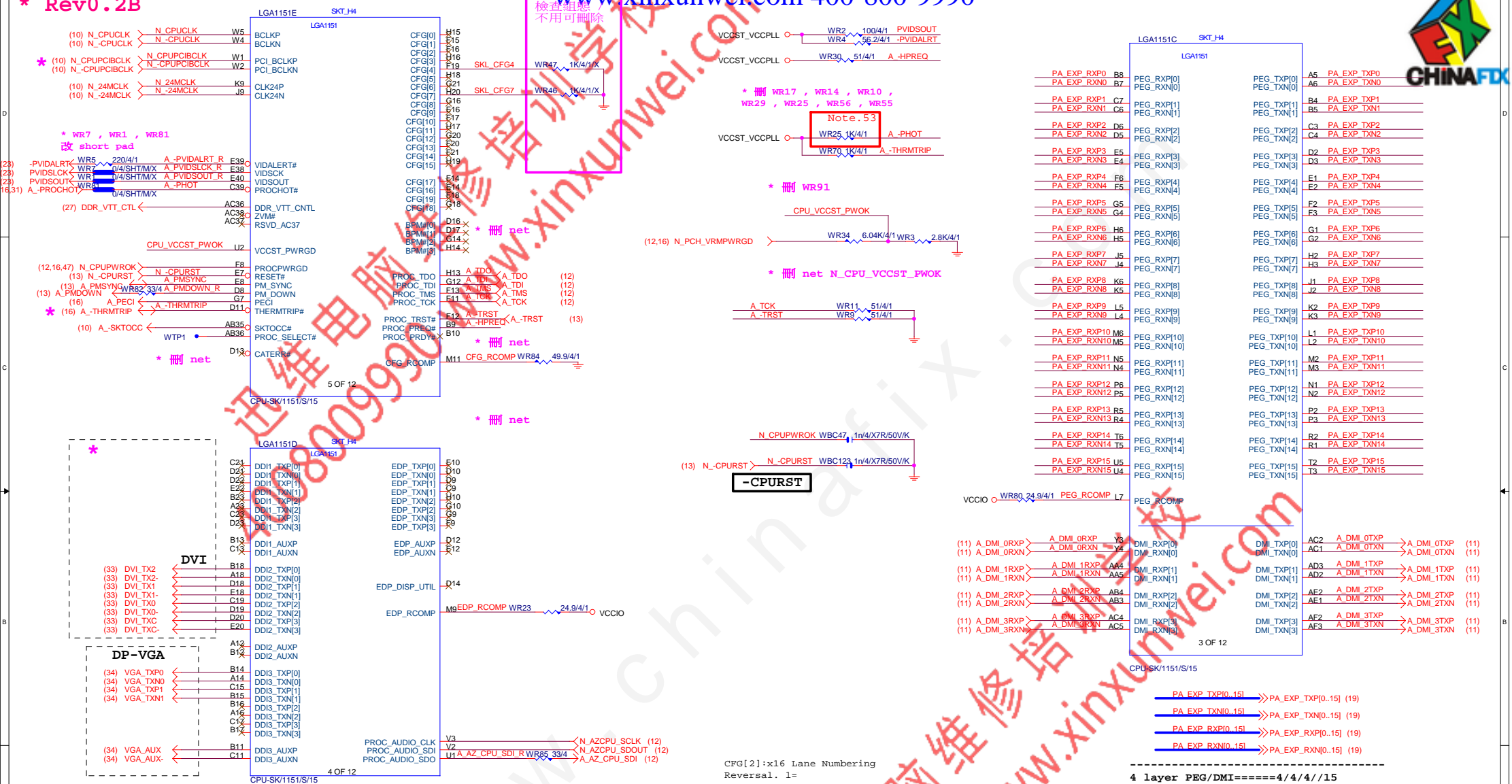
# BLOCK DIAGRAM

www.xinxunwei.com 400-800-9990



\* Rev0.2B

www.xinxunwei.com 400-800-9990



G-15u : (CPU-SK/1151/S/15)  
10SC1-F01151-11R / 10SC1-F01151-12R  
G-FL : (CPU-SK/1151/S/GF)  
10SC1-F01151-21R / 10SC1-F01151-22R

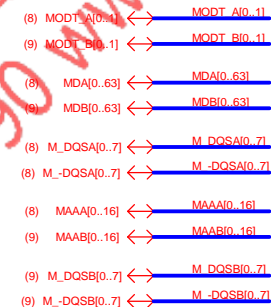
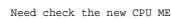
4 layer HDMI/DP/eDP/====4/4/4//15  
6 layer HDMI/DP/eDP/====4/5.5/4//15  
Impedance=85 +- 15%

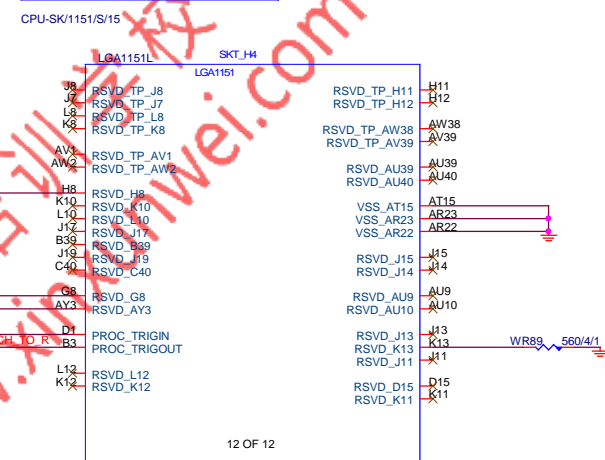
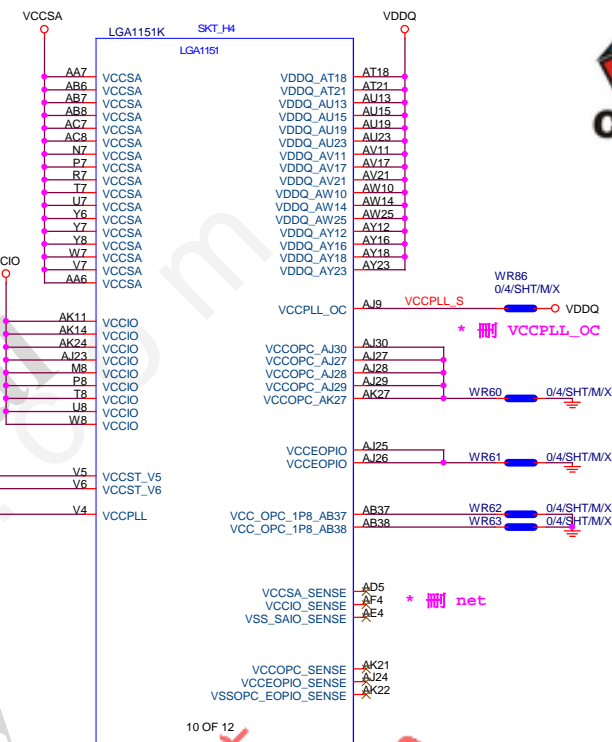
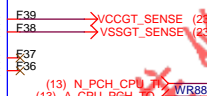
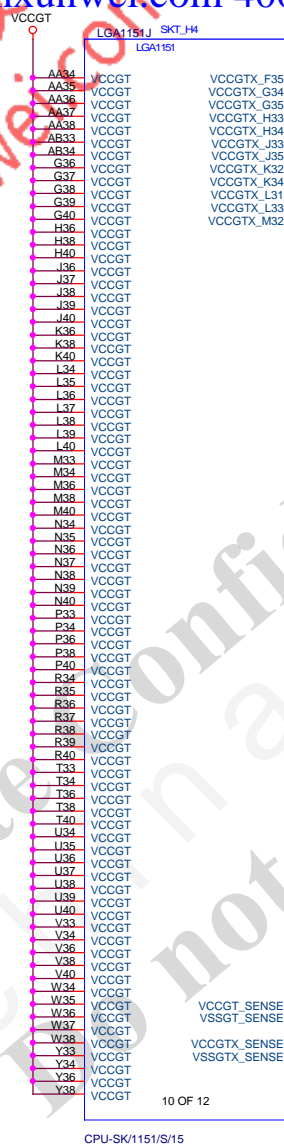
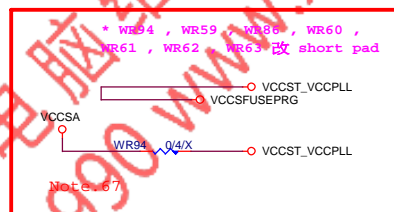
CFG[2]:x16 Lane Numbering Reversal. 1= NORMAL;0=reversal  
CFG[4]: eDP enable:1:disable/0=enable  
CFG[6:5]:PCI Express\* Bifurcation; 11= 1 x16 PCI Express;10=2x8 PCI Express  
CFG[7]: PEG Training;1=(default) PEG Train immediately following RESET#;0=PEG Wait for BIOS

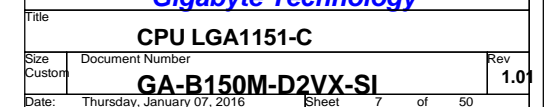
Bifurcation Config.	Signals	Lanes
CFG[8]	CFG[5]	CFG[2]
1x16	1	1
1x16 Reversed	1	0
2x8	1	0
2x8 Reversed	1	0
1x8+2x4	0	1
1x8+2x4 Reversed	0	0

Gigabyte Technology		
CPU LGA1151-A		
Size Custom	Document Number	Rev 1.01
GAB150M-D2VX-SI		
Date: Thursday, January 07, 2016	Sheet 4	of 50







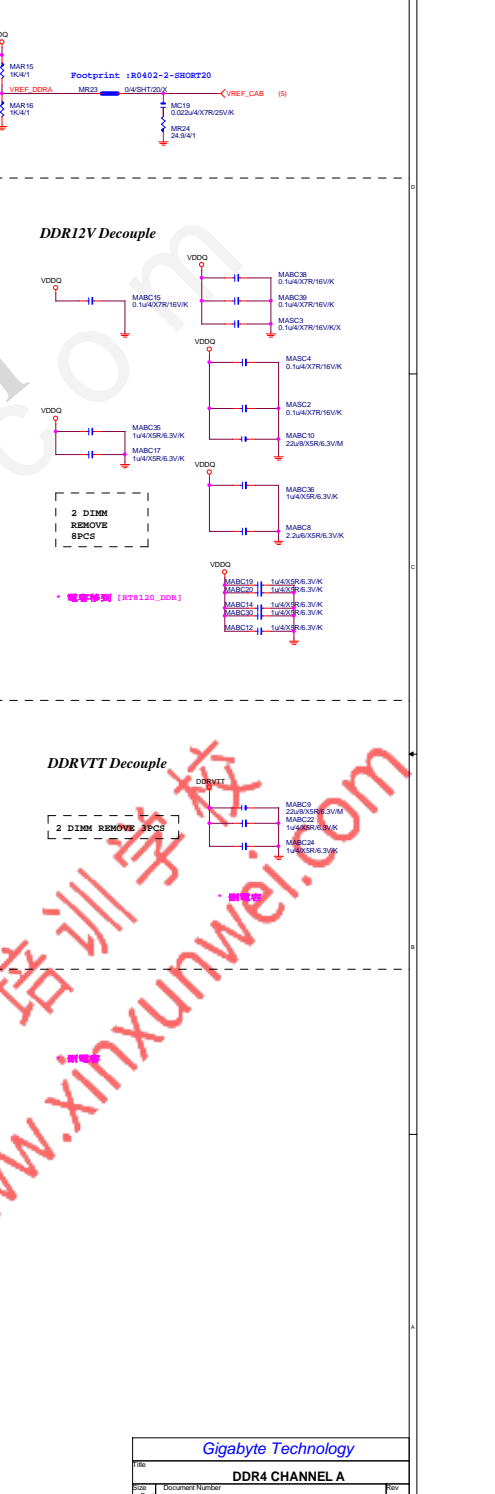






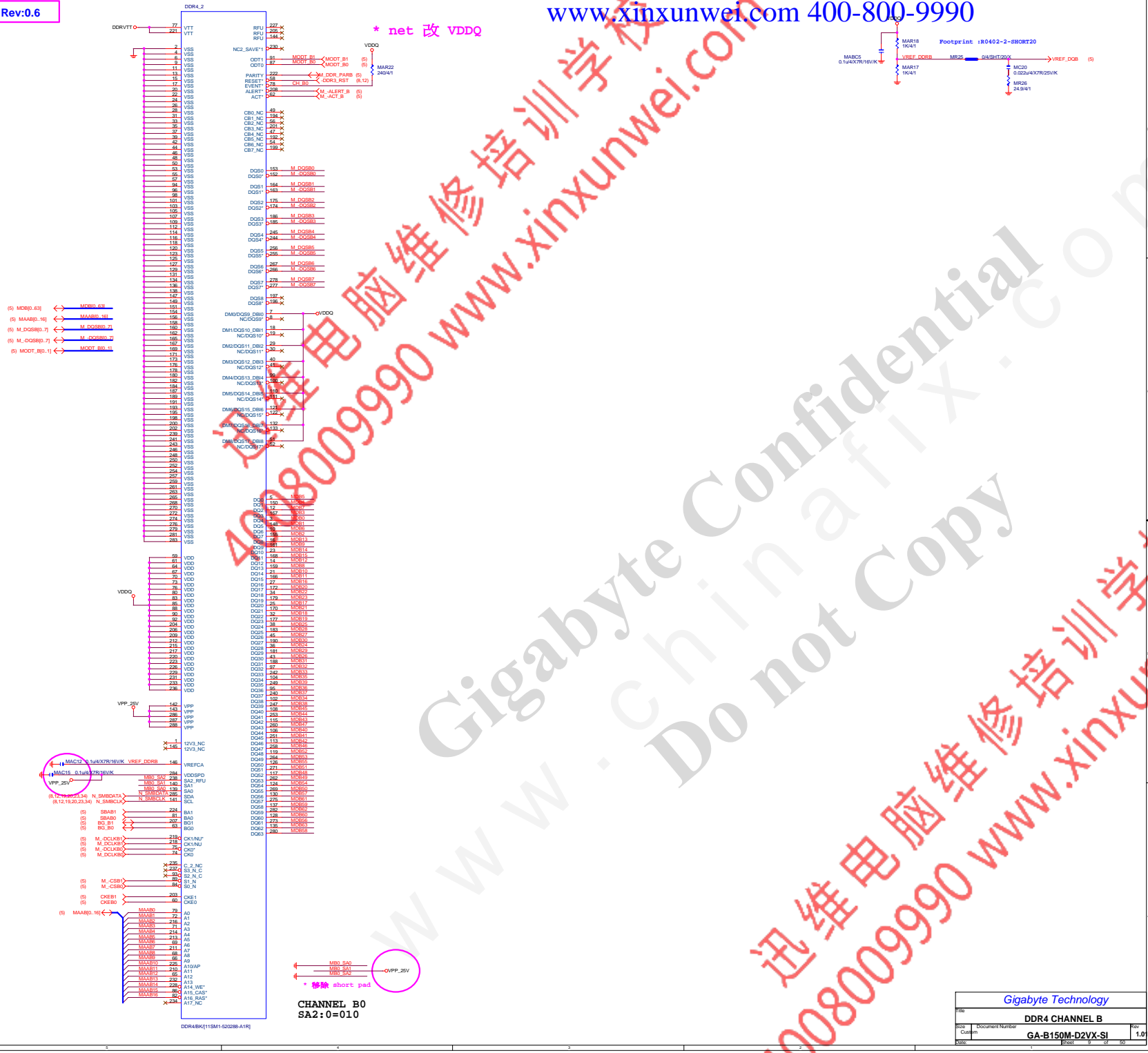
4008009990 www.xinxunwei.com

Gigabyte Technology Confidential Do not Copy

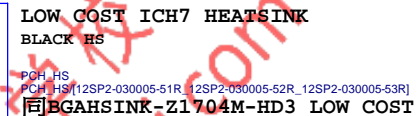


Gigabyte Technology			
File	DDR4 CHANNEL A		
Size	Document Number	GA-B150M-D2VX-SI	Rev
1.0	1.0	1.0	1.0

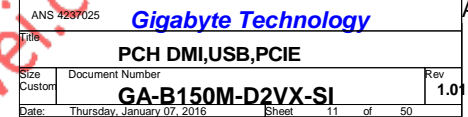


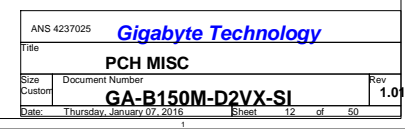


32.768KHZ

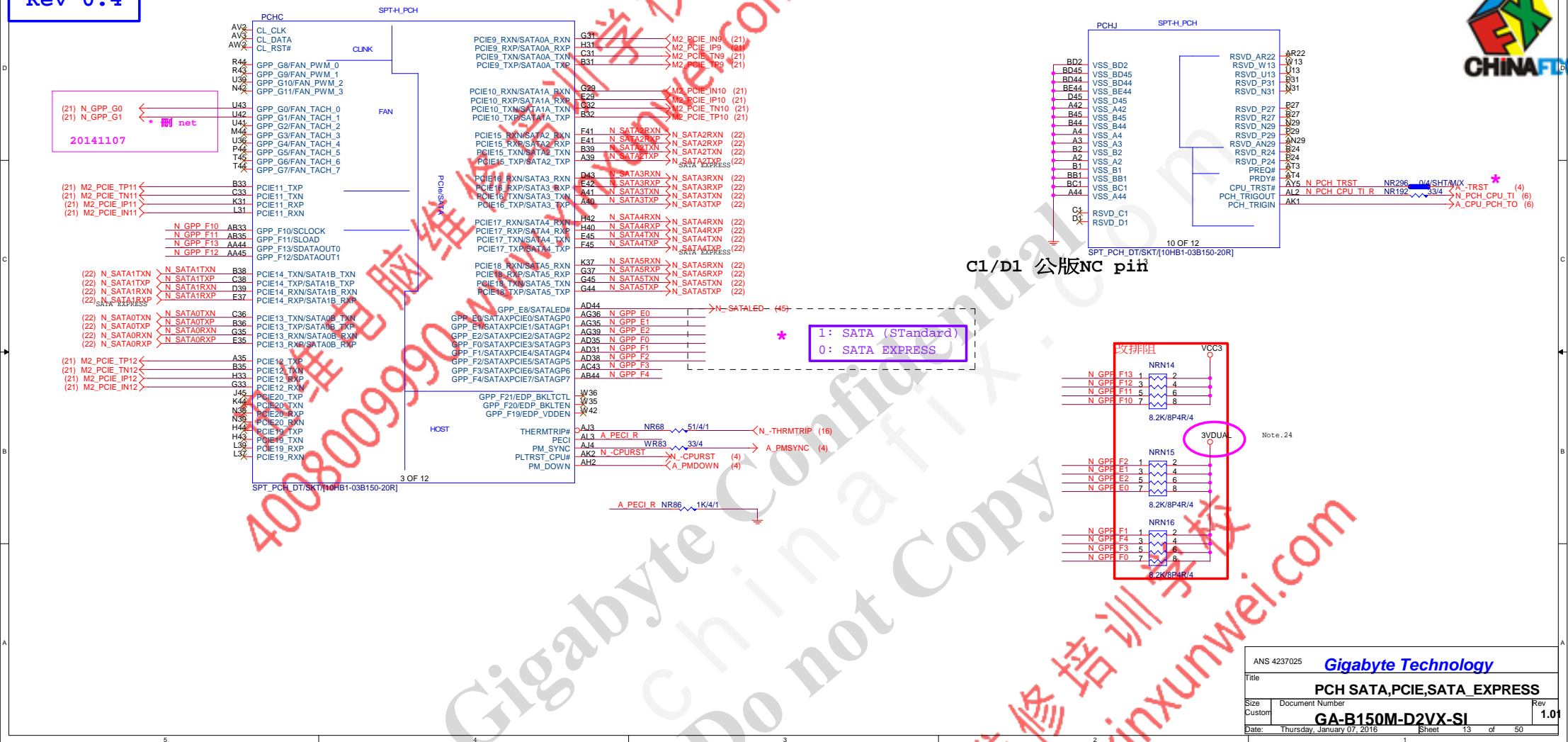


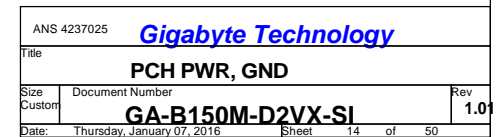
ANS 4237025		<b>Gigabyte Technology</b>	
Title		<b>PCH CLOCK BUFFER</b>	
Size Custom	Document Number		Rev 1.0
<b>GA-B150M-D2VX-SI</b>			
Date:	Thursday, January 07, 2016	Sheet	10 of 50









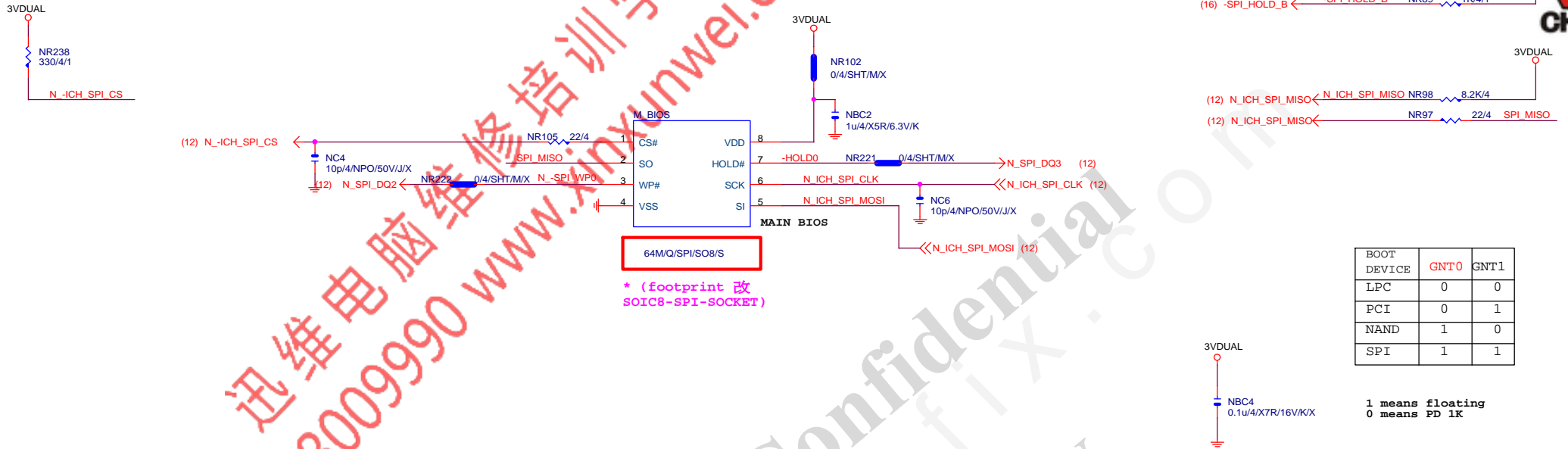


Rev 0.1

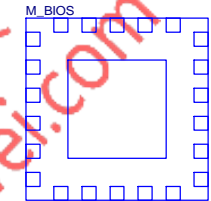
BIOS

www.xinxunwei.com 400-800-9990

MOSI For DMI RX Termination Voltage



\* (footprint 改  
SOIC8-SPI-SOCKET)



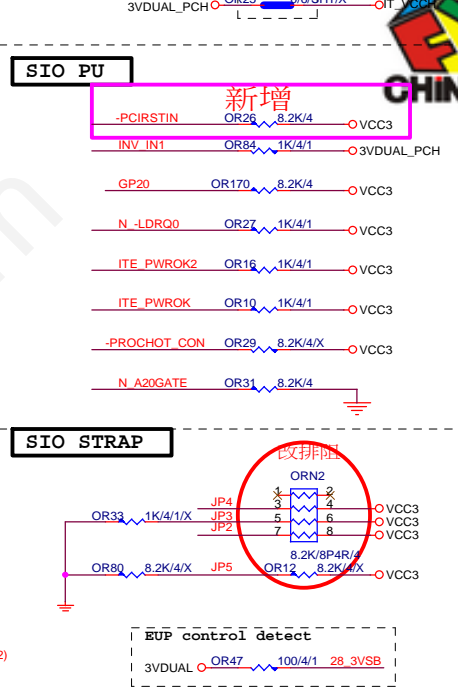
LCP/G-FL/1.27mm/200MIL/WHITE[10SL2-000008-31R]X

\* 試產先上，PVT 移除

BIOS PH

**Gigabyte Technology**

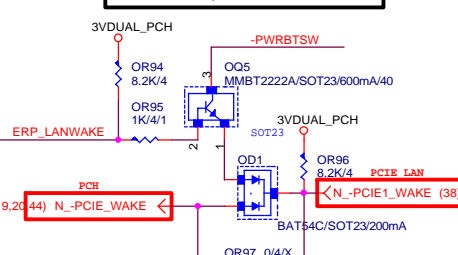
Title		BIOS	
Size	Document Number	GA-B150M-D2VX-S1	
Custom		Rev 1.01	
Date:	Thursday, January 07, 2016	Sheet	15 of 50



JP2	1	Disable WDT
	0	Enable WDT to rest.PWROK
JP3	1	SPI Flash Disable
	0	SPI Flash Enable
JP4	1	k8 power sequency function is Disable
	0	k8 power sequency function is Enable
JP5	1	anti-surge Disable
	0	anti-surge Enable
JP3	1 1	The default value of EC Index 63h/6Bh/73h is 80h.
	1 0	The default value of EC Index 63h/6Bh/73h is FFh.
JP5	0 1	The default value of EC Index 63h/6Bh/73h is 00h.
	0 0	The default value of EC Index 63h/6Bh/73h is 40h.

ERP WAKE on LAN	(依LAN組態選擇)
-----------------	------------

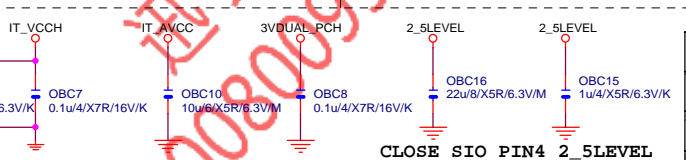
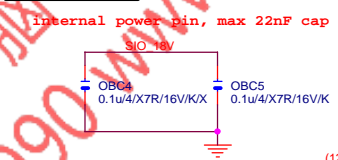
(組態一) **Realtek/ATHEROS LAN**



# Gigabyte Technology

## ITE 8628 LPC IO

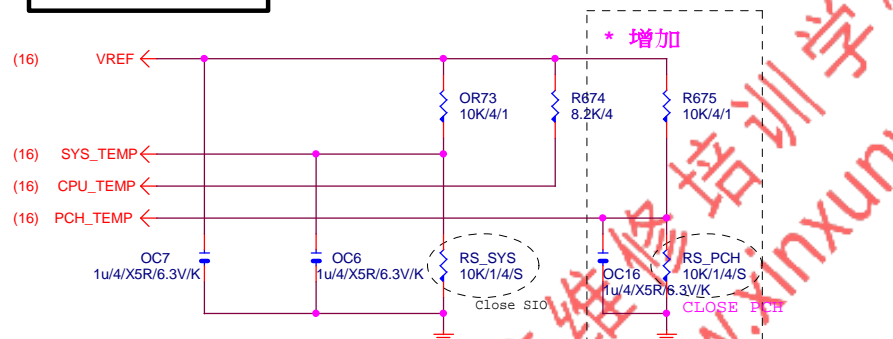
TTB620E GPIO問題匯整	
PIN 50	GP26-第一次接上POWER時 會拉 Lo
PIN 90/91	DEFAULT 為 HDLED FUNCTION GP93 BYPASS TO GP92 高溫時 GP92 會被拉 Lo (ITE BUG)
PIN 108	GP40--- POWER ON 時會拉 Lo
PIN 111/112	MOUSE 跟 PAN6 FUNCTION 擇一使用，不然會互相干擾
PIN 22	PIN22，需高於3V，若低於 該部分 COM PORT 及 LPT 裝置 攝噪器會異常動作。



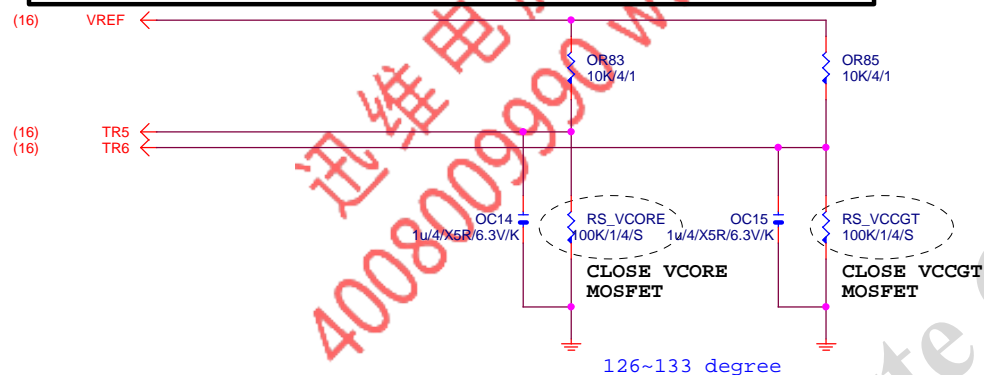


## TEMP H/W MONITOR

REV 1.04



## RS\_VCORE ~ RS\_VCCGT CLOSE CPU\_VCORE &amp; VCCGT MOSFET

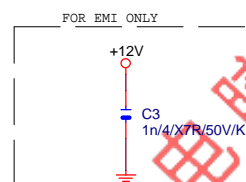
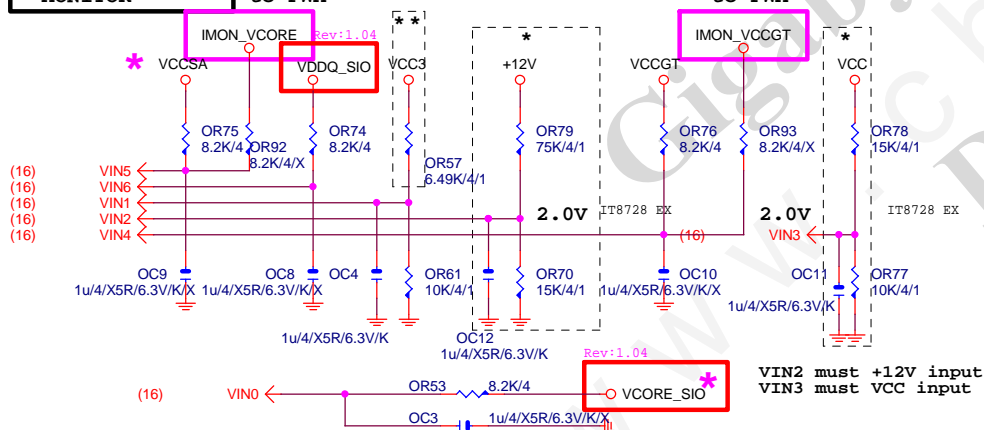


## VOLTAGE-- H/W MONITOR

Connect to PWM

★ IT8728 BX  
★★ IT8728 CX

Connect to PWM



VIN2 must +12V input  
VIN3 must VCC input

Gigabyte Technology

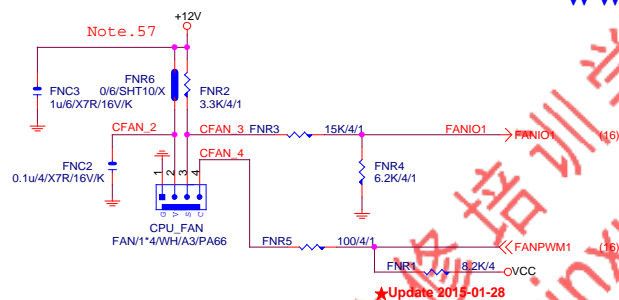
Title			HWM,KB/MS, FAN CTRL	
Size	Document Number	Rev		
Custom	GA-B150M-D2VX-SI	1.01		
Date:	Thursday, January 07, 2016	Sheet	17	of 50



# CPU SMART FAN

Rev: 0.53

+12V  
Trace 40mil  
FNR6  
Pad  
10 mil  
Pad  
Trace 40mil  
Pin2

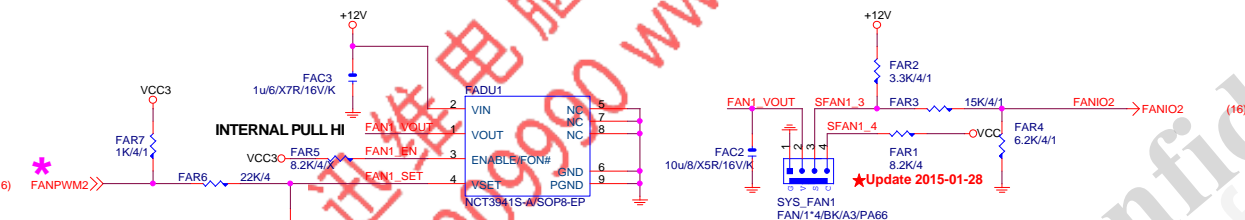


# SYSTEM FAN1

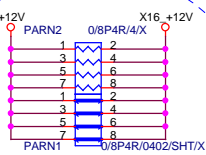
A.

## Linear SYS\_FAN

Enable Function (NCT3941S)  
Full Turn On Function (NCT3941S-A)



Gigabyte Technology		
Title		
FAN CTRL		
Size	Document Number	Rev
Custom	GA-B150M-D2VX-SI	1.01
Date:	Thursday, January 07, 2016	Sheet 18 of 50

**+12V\_protect  
short-wire test**

PA\_EXP\_RXP0[0..15] >> PA\_EXP\_RXP[0..15] (4)  
PA\_EXP\_RXN0[0..15] >> PA\_EXP\_RXN[0..15] (4)  
PA\_EXP\_TXP0[0..15] >> PA\_EXP\_TXP[0..15] (4)  
PA\_EXP\_TXN0[0..15] >> PA\_EXP\_TXN[0..15] (4)

PA_EXP_TXP0	PAC5	0.22u/4/X5R/6.3V/K	PA_EXP_TXP0_C
PA_EXP_TXN0	PAC4	0.22u/4/X5R/6.3V/K	PA_EXP_TXN0_C
PA_EXP_TXP1	PAC6	0.22u/4/X5R/6.3V/K	PA_EXP_TXP1_C
PA_EXP_TXN1	PAC7	0.22u/4/X5R/6.3V/K	PA_EXP_TXN1_C
PA_EXP_TXP2	PAC8	0.22u/4/X5R/6.3V/K	PA_EXP_TXP2_C
PA_EXP_TXN2	PAC9	0.22u/4/X5R/6.3V/K	PA_EXP_TXN2_C
PA_EXP_TXP3	PAC10	0.22u/4/X5R/6.3V/K	PA_EXP_TXP3_C
PA_EXP_TXN3	PAC11	0.22u/4/X5R/6.3V/K	PA_EXP_TXN3_C
PA_EXP_TXP4	PAC12	0.22u/4/X5R/6.3V/K	PA_EXP_TXP4_C
PA_EXP_TXN4	PAC13	0.22u/4/X5R/6.3V/K	PA_EXP_TXN4_C
PA_EXP_TXP5	PAC14	0.22u/4/X5R/6.3V/K	PA_EXP_TXP5_C
PA_EXP_TXN5	PAC15	0.22u/4/X5R/6.3V/K	PA_EXP_TXN5_C
PA_EXP_TXP6	PAC16	0.22u/4/X5R/6.3V/K	PA_EXP_TXP6_C
PA_EXP_TXN6	PAC17	0.22u/4/X5R/6.3V/K	PA_EXP_TXN6_C
PA_EXP_TXP7	PAC18	0.22u/4/X5R/6.3V/K	PA_EXP_TXP7_C
PA_EXP_TXN7	PAC19	0.22u/4/X5R/6.3V/K	PA_EXP_TXN7_C
PA_EXP_TXP8	PAC20	0.22u/4/X5R/6.3V/K	PA_EXP_TXP8_C
PA_EXP_TXN8	PAC21	0.22u/4/X5R/6.3V/K	PA_EXP_TXN8_C
PA_EXP_TXP9	PAC22	0.22u/4/X5R/6.3V/K	PA_EXP_TXP9_C
PA_EXP_TXN9	PAC23	0.22u/4/X5R/6.3V/K	PA_EXP_TXN9_C
PA_EXP_TXP10	PAC24	0.22u/4/X5R/6.3V/K	PA_EXP_TXP10_C
PA_EXP_TXN10	PAC25	0.22u/4/X5R/6.3V/K	PA_EXP_TXN10_C
PA_EXP_TXP11	PAC26	0.22u/4/X5R/6.3V/K	PA_EXP_TXP11_C
PA_EXP_TXN11	PAC27	0.22u/4/X5R/6.3V/K	PA_EXP_TXN11_C
PA_EXP_TXP12	PAC28	0.22u/4/X5R/6.3V/K	PA_EXP_TXP12_C
PA_EXP_TXN12	PAC29	0.22u/4/X5R/6.3V/K	PA_EXP_TXN12_C
PA_EXP_TXP13	PAC30	0.22u/4/X5R/6.3V/K	PA_EXP_TXP13_C
PA_EXP_TXN13	PAC31	0.22u/4/X5R/6.3V/K	PA_EXP_TXN13_C
PA_EXP_TXP14	PAC32	0.22u/4/X5R/6.3V/K	PA_EXP_TXP14_C
PA_EXP_TXN14	PAC33	0.22u/4/X5R/6.3V/K	PA_EXP_TXN14_C
PA_EXP_TXP15	PAC34	0.22u/4/X5R/6.3V/K	PA_EXP_TXP15_C
PA_EXP_TXN15	PAC35	0.22u/4/X5R/6.3V/K	PA_EXP_TXN15_C

PCIE16:16/5/5/5/16

PCI-E REV:1.1--&gt; 2.5GHZ

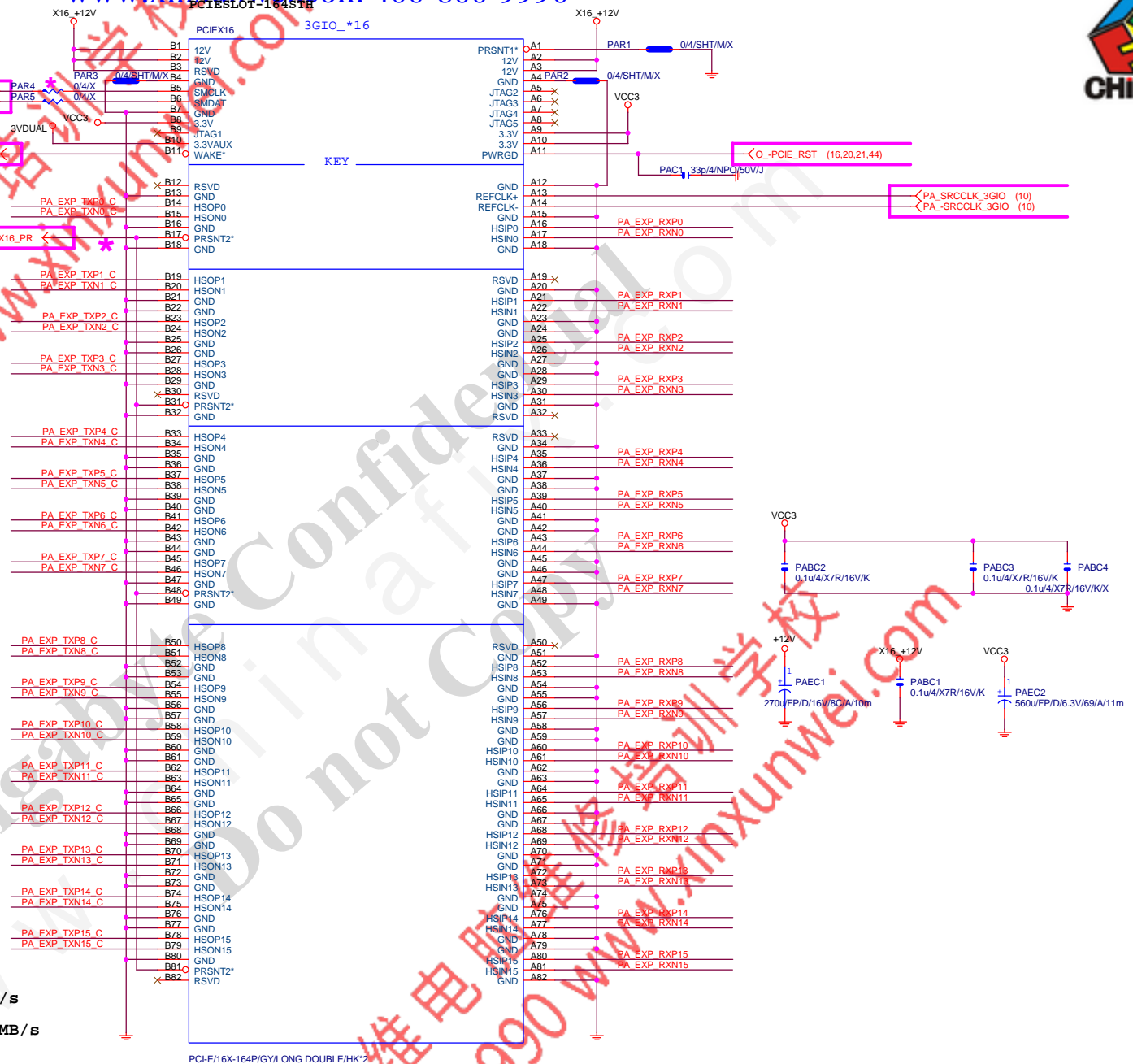
PCE-E X1(單向) BANDWIDTH=2.5GHz\*(8b/10b)=2Gb/s=250MB/s

PCE-E X1(雙向) BANDWIDTH=2.5GHz\*(8b/10b)X2=4Gb/s=500MB/s

PCE-E X16(單向) BANDWIDTH=2.5GHz\*(8b/10b)X16=32Gb/s=4GB/s

PCE-E X16(雙向) BANDWIDTH=2.5GHz\*(8b/10b)X16X2=64Gb/s=8GB/s

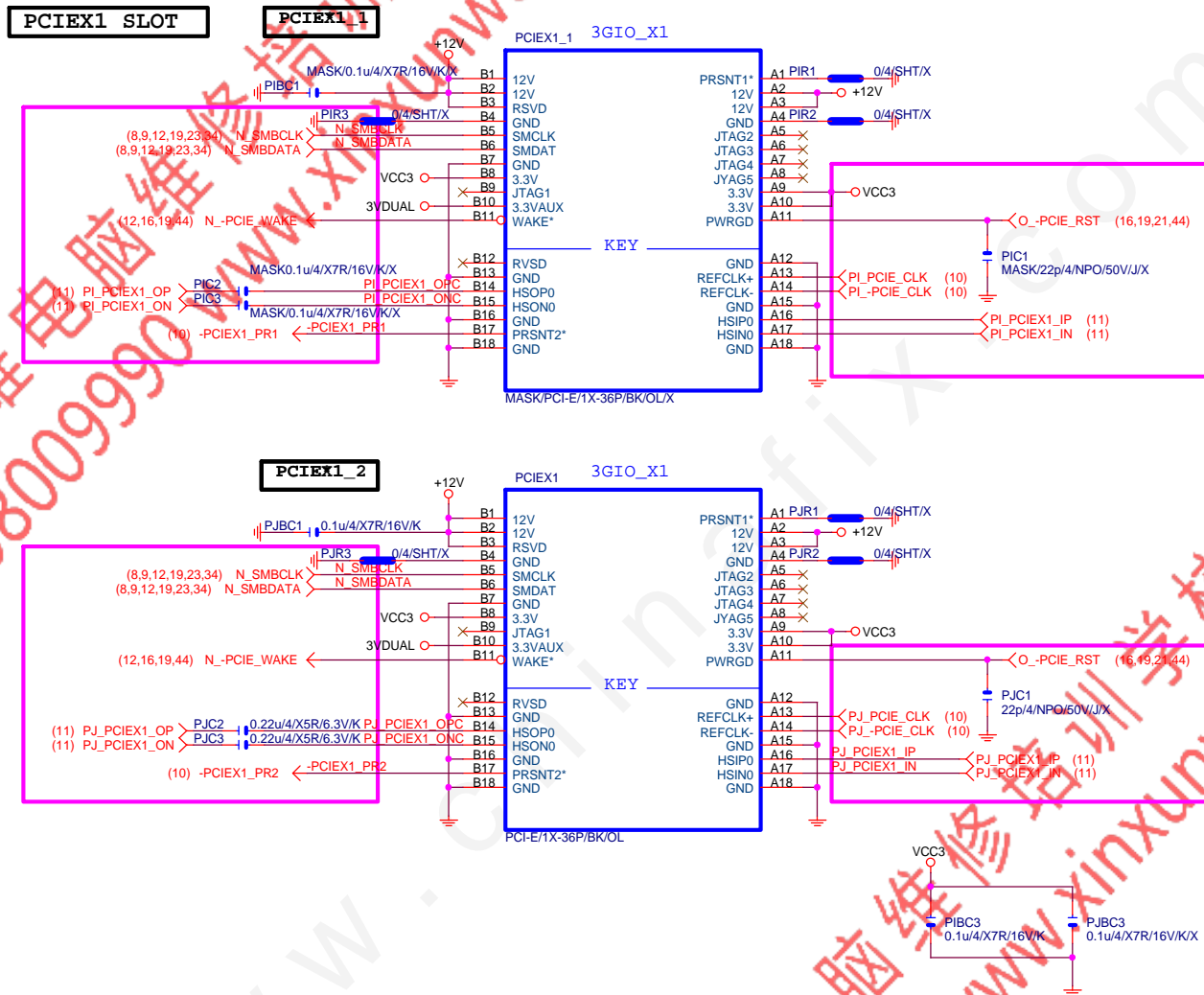
PCI-E REV:2.0--&gt; 5GHZ



PCI-E/16X-164P/GY/LONG DOUBLE/HK\*2

Gigabyte Technology

Title			PCI EXPRESS * 16	
Size	Document Number	Rev		1.01
Custom	GA-B150M-D2VX-SI			
Date:	Thursday, January 07, 2016	Sheet	19	of 50



Gigabyte Technology

Title				
PCIE_X1 1,2				
Size	Document Number			Rev
Custom	GA-B150M-D2VX-SI			1.01
Date:	Thursday, January 07, 2016	Sheet	20 of 50	



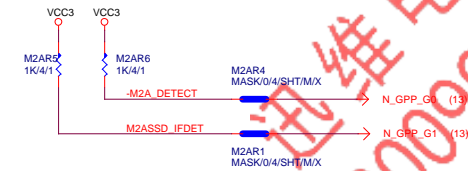
## M.2 Lane4 from PCH port18

## M.2 Lane3 from PCH port17

## M.2 Lane2 from PCH port16

## M.2 Lane2 from PCH port15

## 支援SATA and M.2 function



## SATA : GND, PCIE : NC

M2插卡時為Low

M2卡時為Low

M2卡時為Low

M2卡時為Low

M2卡時為Low

M2卡時為Low

M2卡時為Low

M2卡時為Low

M2卡時為Low

M2卡時為Low

M2卡時為Low

M2卡時為Low

M2卡時為Low

M2卡時為Low

M2卡時為Low

M2卡時為Low

M2卡時為Low

M2卡時為Low

M2卡時為Low

M2卡時為Low

M2卡時為Low

M2卡時為Low

M2卡時為Low

M2卡時為Low

M2卡時為Low

M2卡時為Low

M2卡時為Low

M2卡時為Low

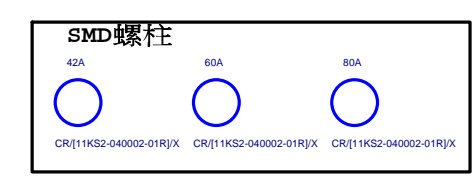
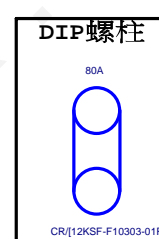
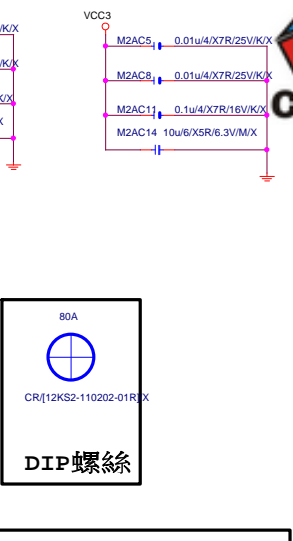
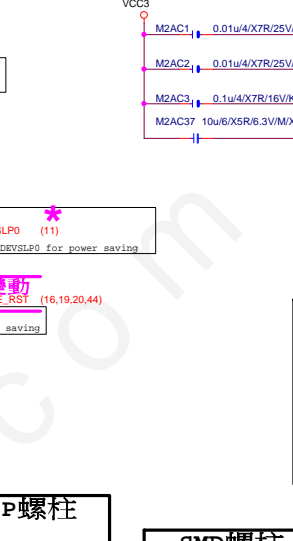
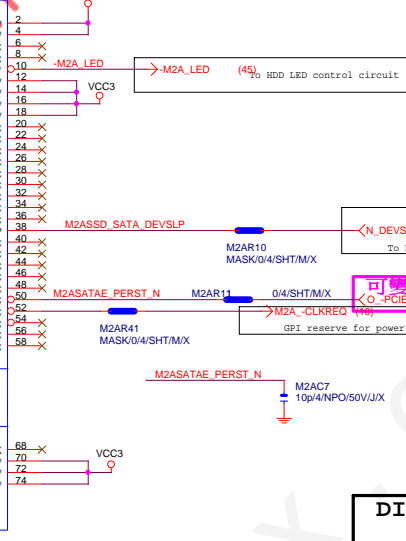
M2卡時為Low

M2卡時為Low

M2卡時為Low

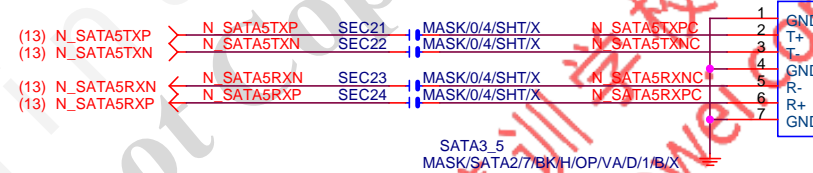
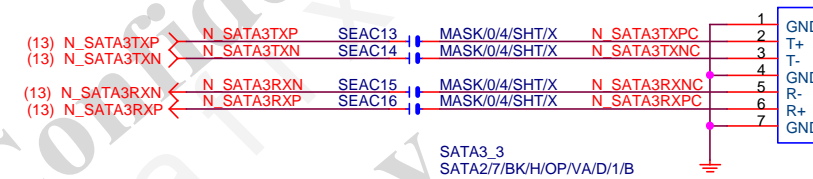
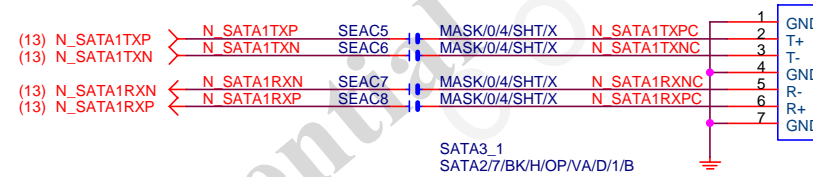
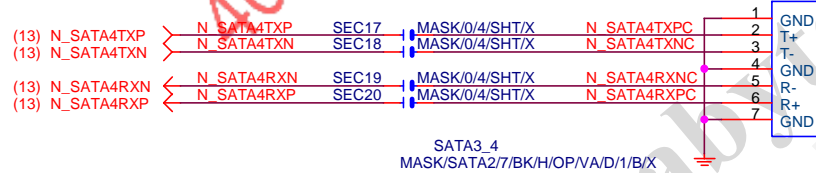
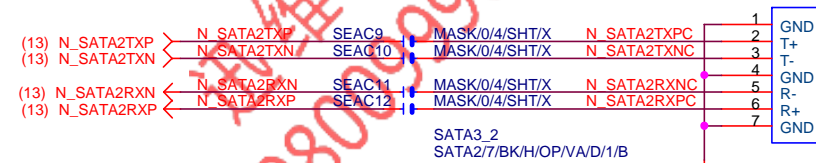
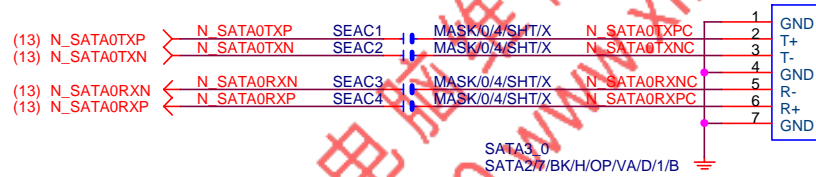
M2卡時為Low

M2卡時為Low

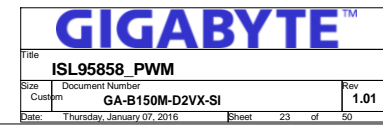


M.2 有插卡 /沒插卡 GPP_G0	M.2插何種卡? GPP_G1	SATA Express 插何種硬碟? GPP_E0/E2/F1	IO15 (S0)	IO16 (S1)	IO17	IO18	IO19 (S0)	IP20 (S1)
有插卡 (Low)	SATA Mode (Low)	SATA (Hi)	SATA (M.2)	PCIE x1	PCIE x1	PCIE x1	PCIE x1	SATA
		SATA Express (Low)	SATA (M.2)	PCIE x1	PCIE x1	PCIE x1	SATA Express	
	PCIE Mode (Hi)	SATA (Hi)		PCIE x4 (For M.2)			SATA	SATA
		SATA Express (Low)		PCIE x4 (For M.2)			SATA Express	
沒插卡 (Hi)	Don't Care (Hi)	SATA (Hi)		PCIE x4			SATA	SATA
		SATA Express (Low)		PCIE x4			SATA Express	

Note.40

**Gigabyte Technology**Title  
**SATA EXPRESS**Size Custom Document Number  
**GA-B150M-D2VX-SI** Rev 1.01

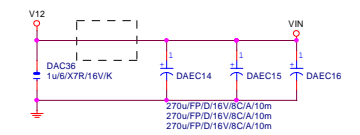
Date: Thursday, January 07, 2016 Sheet 22 of 50



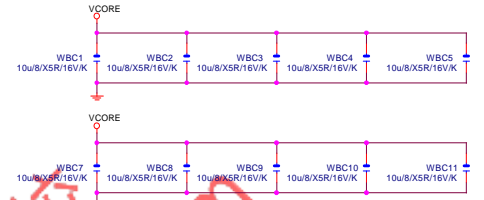
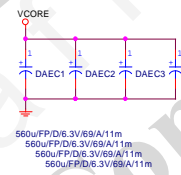
VCORE



VIN CAP 270u\*3PCS

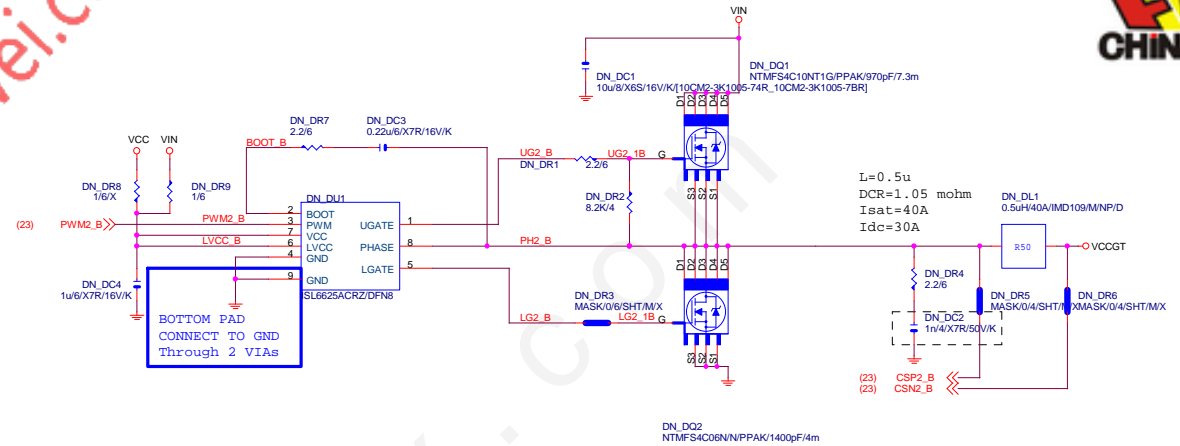


VCORE CAP 560u\*4PCS 10u\*10PCS



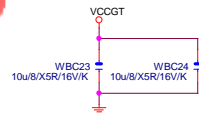
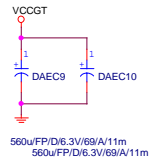
GIGABYTE™			
Title			
ISL95858_MOS			
Size	Document Number	Rev	
Custm	GA-B150M-D2VX-SI	1.01	
Date:	Thursday, January 07, 2016	Sheet	24 of 50

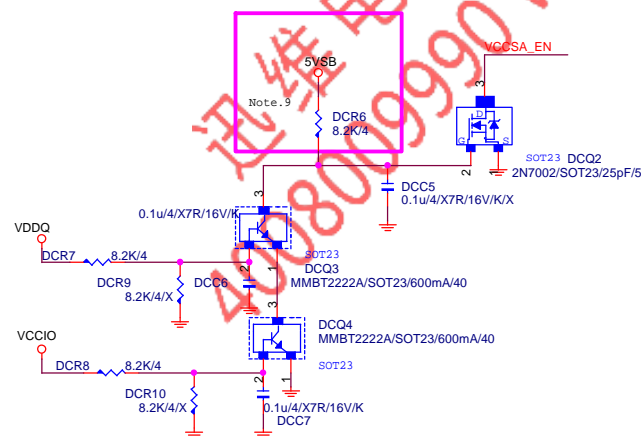
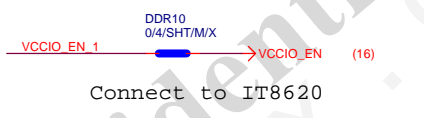
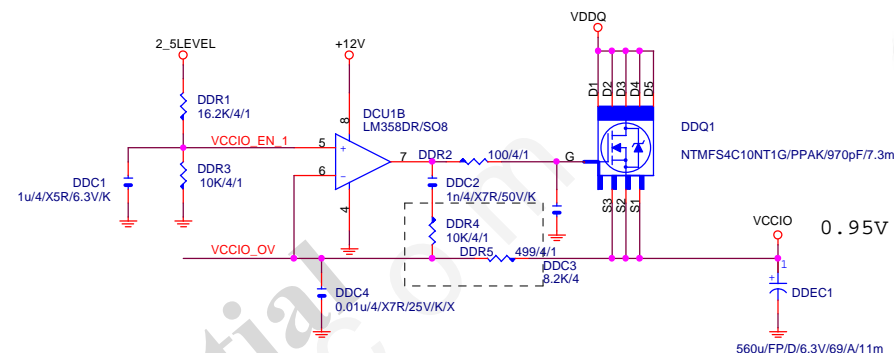
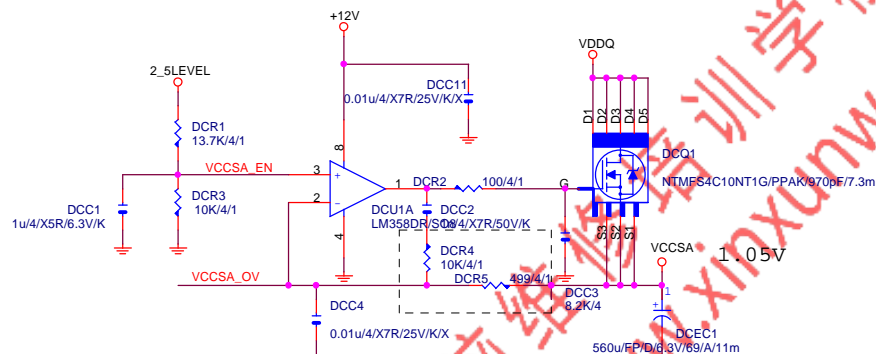




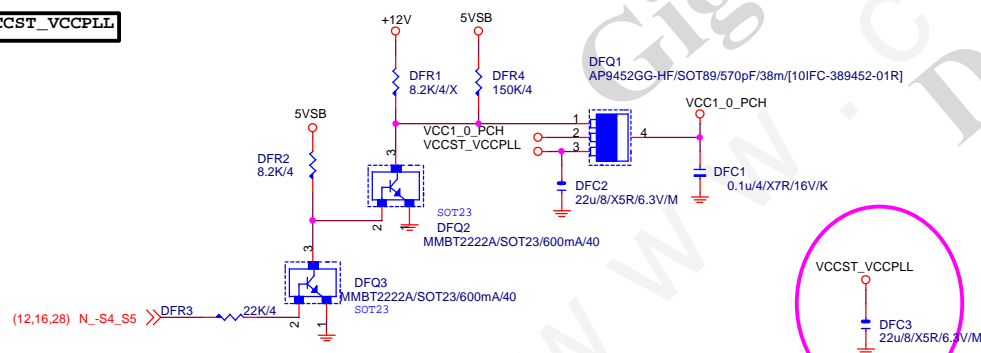
## VCCGT CAP

560u\*2PCS  
10u\*2PCS





## VCCST\_VCCPLL



GIGABYTE™			
Title VCCSA_VCCIO			
Size	Document Number	Rev	
Custom	GA-B150M-D2VX-SI	1.01	
Date:	Thursday, January 07, 2016	Sheet	26 of 50



REV:0.33

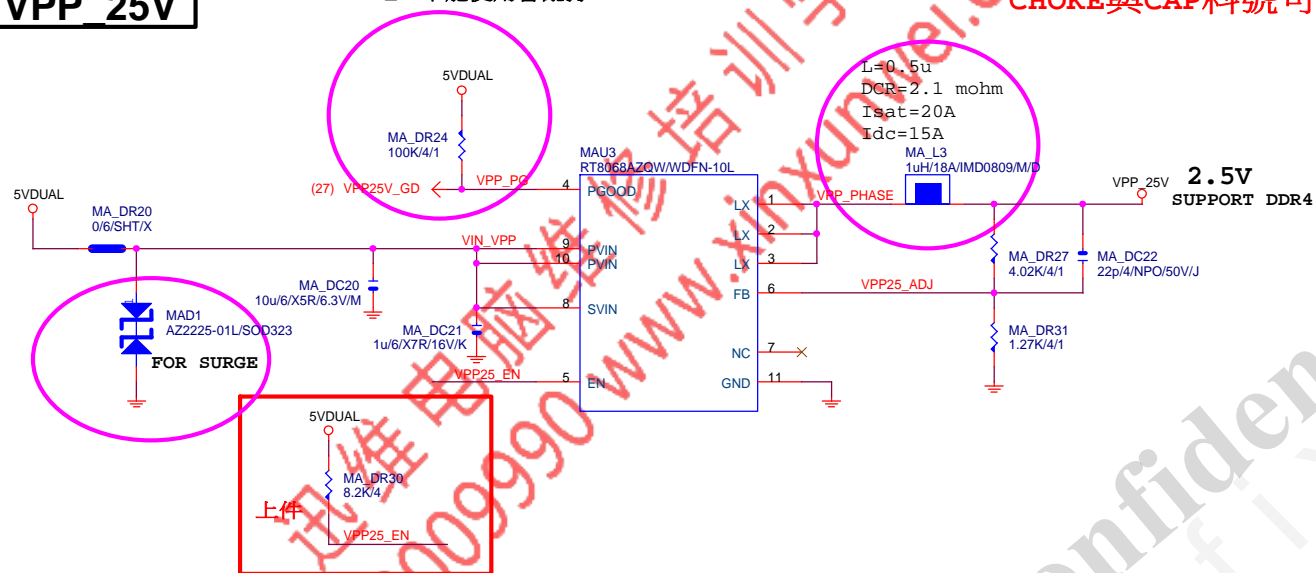
www.xinxunwei.com 400-800-9990



## VPP\_25V

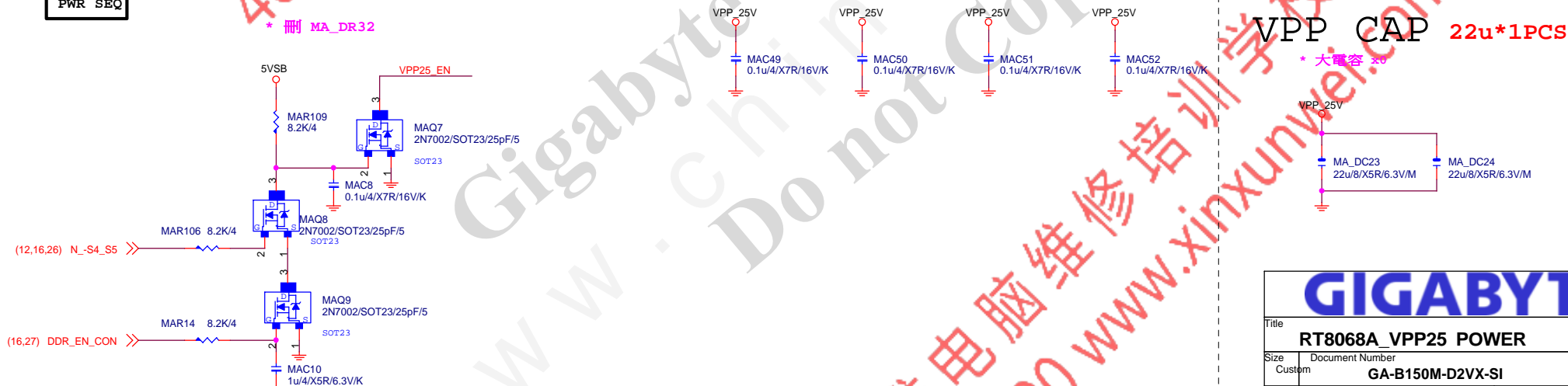
VPP25V\_GD不能使用會亂打

CHOKE與CAP料號可變



## PWR\_SEQ

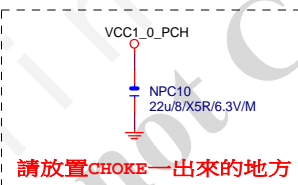
\* 刪 MA\_DR32



GIGABYTE™

Title		
RT8068A_VPP25 POWER		
Size	Document Number	Rev
Custom	GA-B150M-D2VX-SI	1.01
Date:	Thursday, January 07, 2016	Sheet 28 of 50





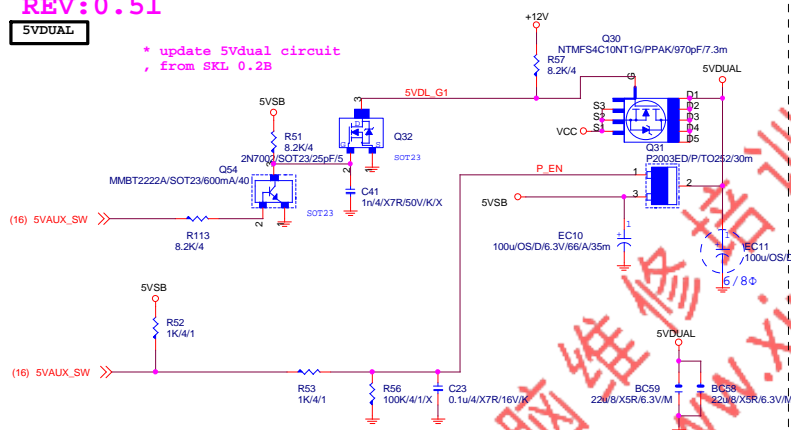
請放置CHOKE一出來的地方

Title				RT8237_PCH POWER			
Size		Document Number				Rev	
Custom		GA-B150M-D2VX-SI				1.01	
Date:		Thursday, January 07, 2016		Sheet		29 of 50	

REV: 0.51

5VDUAL

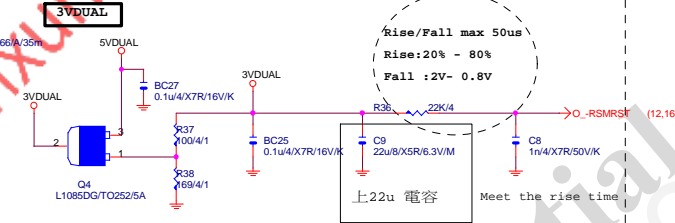
\* update 5Vdual circuit  
from SKL 0.2B



www.xinxunwei.com 400-800-9990



3VDUAL

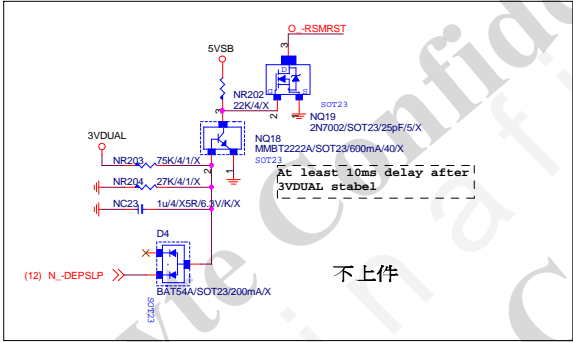
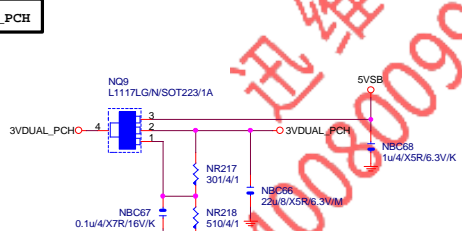


Rise/Fall max 50us  
Rise: 20% - 80%  
Fall: 2V - 0.8V

上22u 电容

Meet the rise time

3VDUAL\_PCH

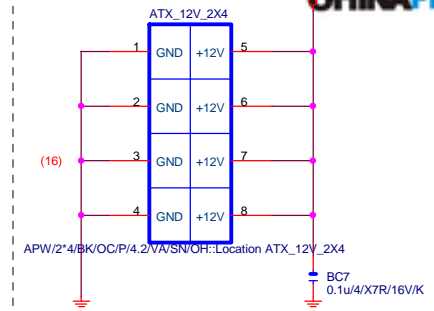


At least 10ms delay after 3VDUAL stable

不上件

Gigabyte Technology

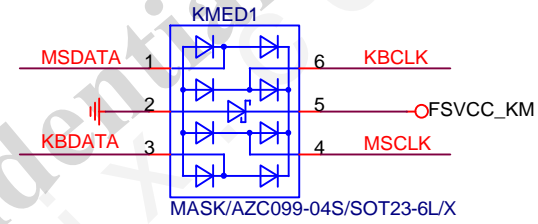
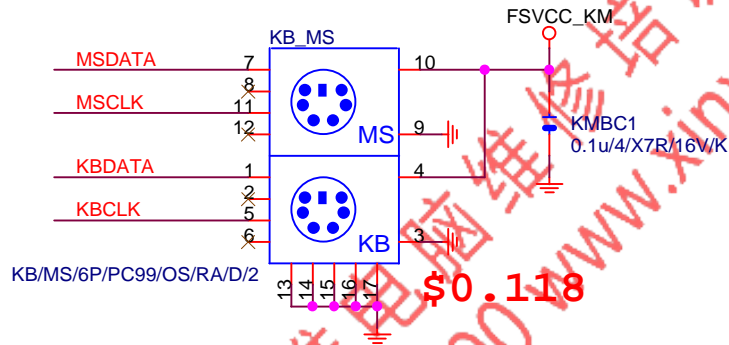
Title		
DISCRETE POWER		
Size	Document Number	Rev
Custom	GA-B150M-D2VX-SI	1.01
Date:	Thursday, January 07, 2016	Sheet 30 of 50



KB\_MS\_USB

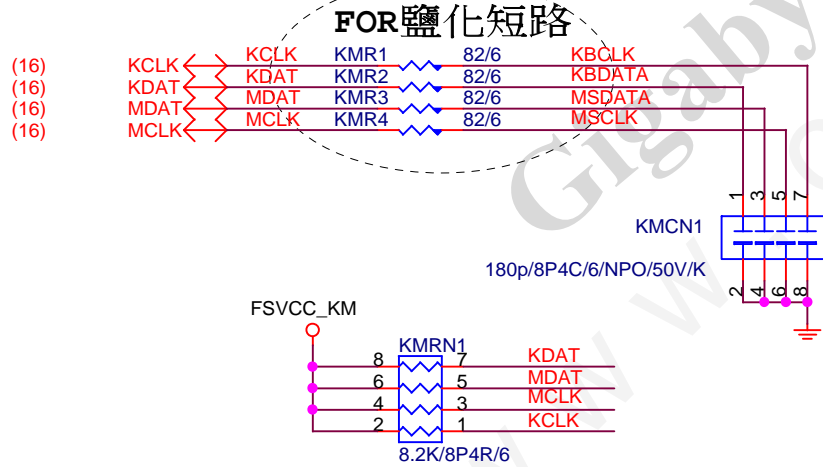
Rev: 0.51

ESD



KB\_MS\_USB DAMPING/PU

KB\_MS\_USB PWR



Gigabyte Technology

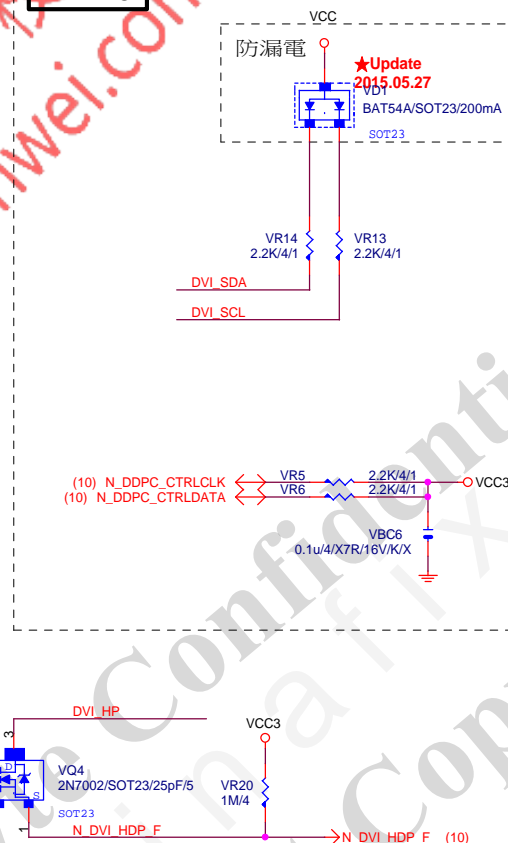
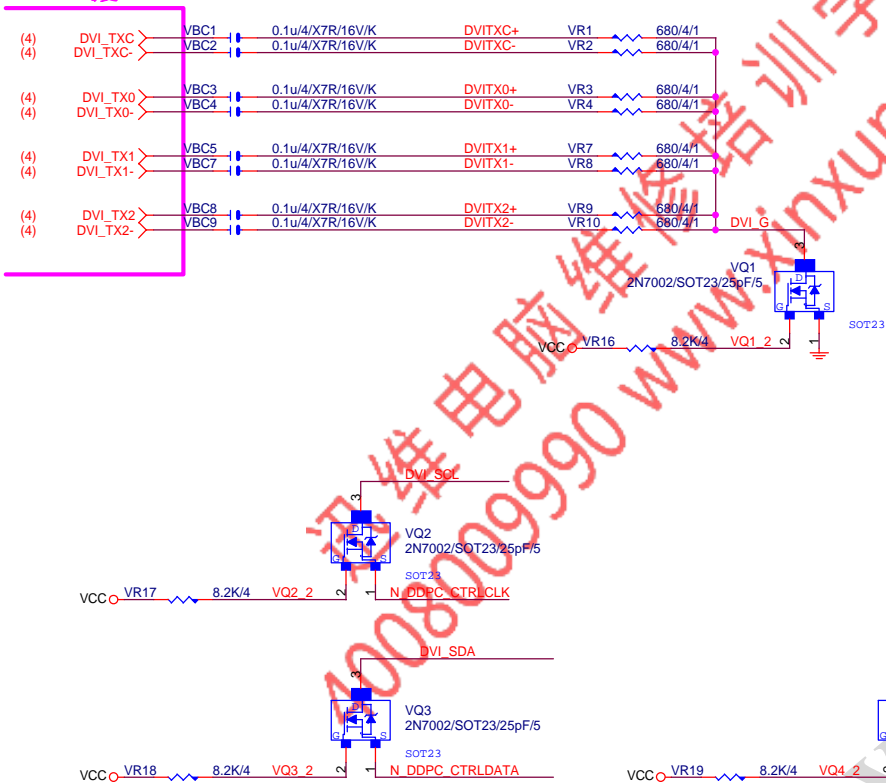
Title			
KB_MS_USB			
Size	Document Number	Rev	
A	GA-B150M-D2VX-SI	1.01	
Date:	Thursday, January 07, 2016	Sheet	32 of 50





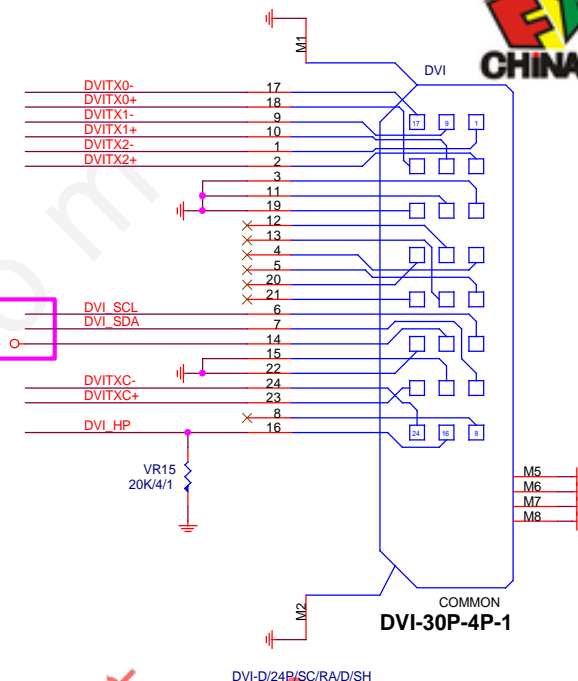
NET 可變

DVI:20/4/6/4/20  
Impedance=85 +- 17.5%

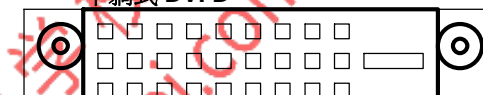


## NET 可變

**\***

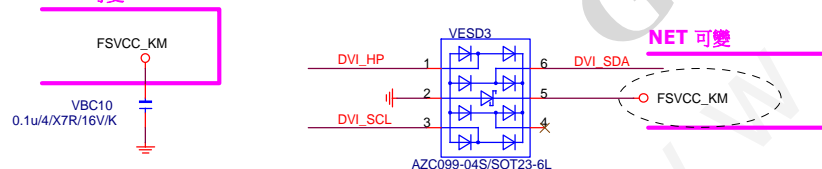


~~平躺式~~ DVI-D



**ESD**

## NET 可變



Close to connector



Close to connector

Close to connector

## Gigabyte Technology

Title
-------

## DVI

Size	Custom
------	--------

Document Number

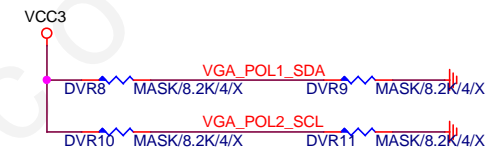
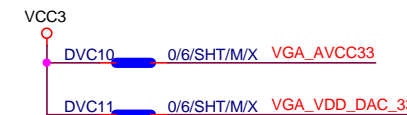
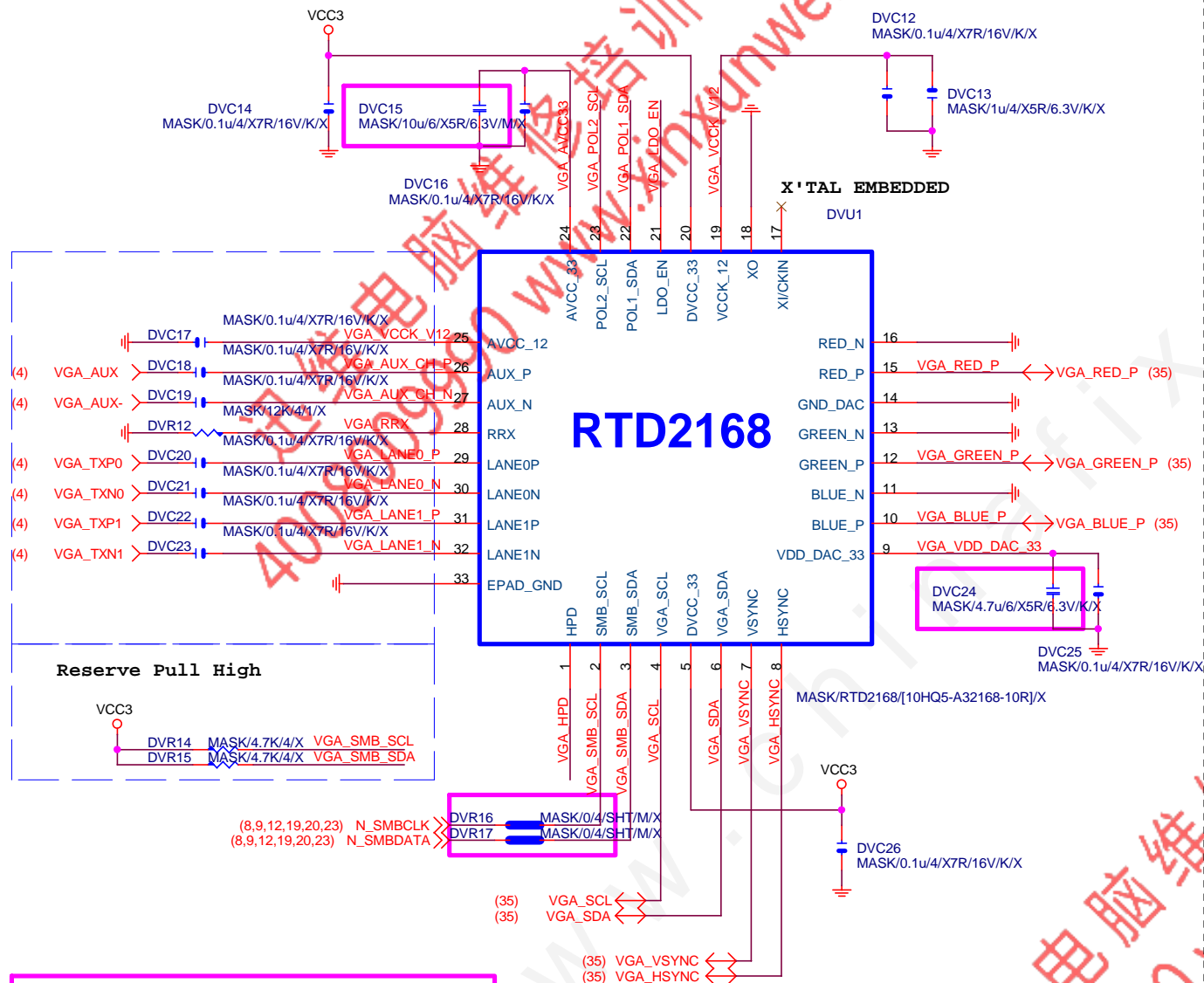
GA-B150M-D2VX-S1 Rev 1.01

Date: Thursday, January 07, 2016

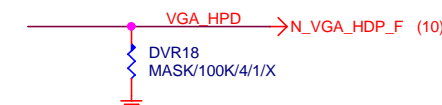
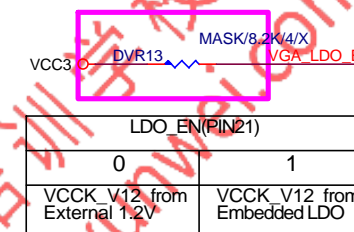
Sheet 33 of 50

Rev  
1.0

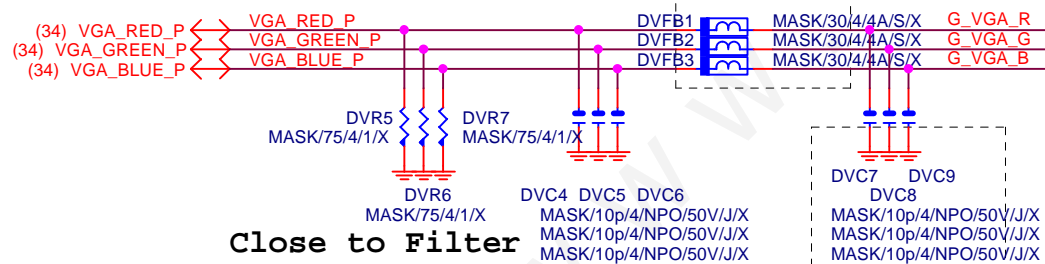
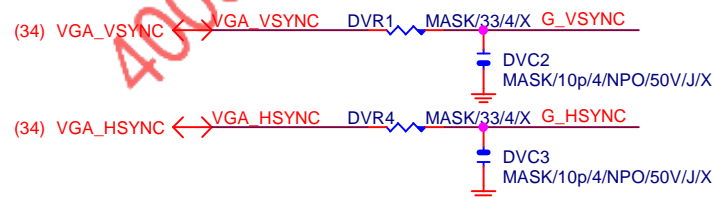
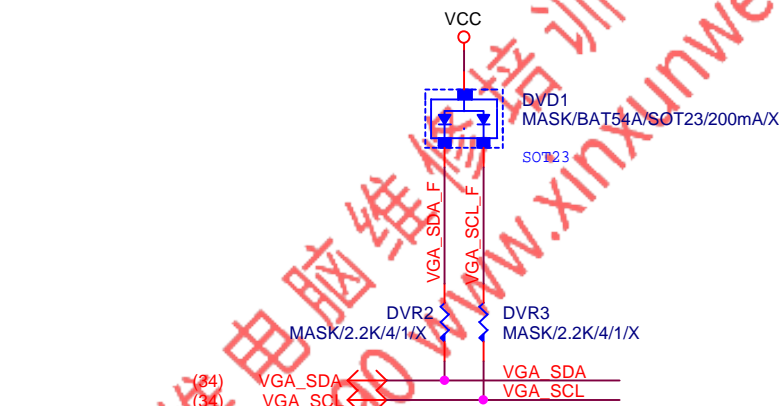
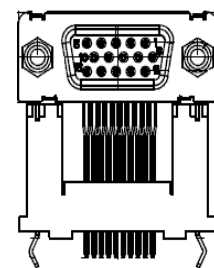
Sheet 33 of 50



		POL1_SDA(PIN22)	
		0	1
POL2_SCL (PIN23)	0	X	EP MODE
	1	ROM ONLY MODE	EEPROM MODE



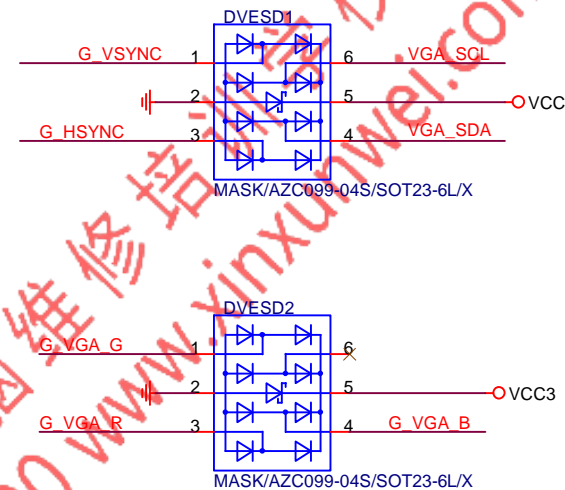
**Gigabyte Technology**  
**DP-VGA RTD2168**



Close to Filter

FOR EMI

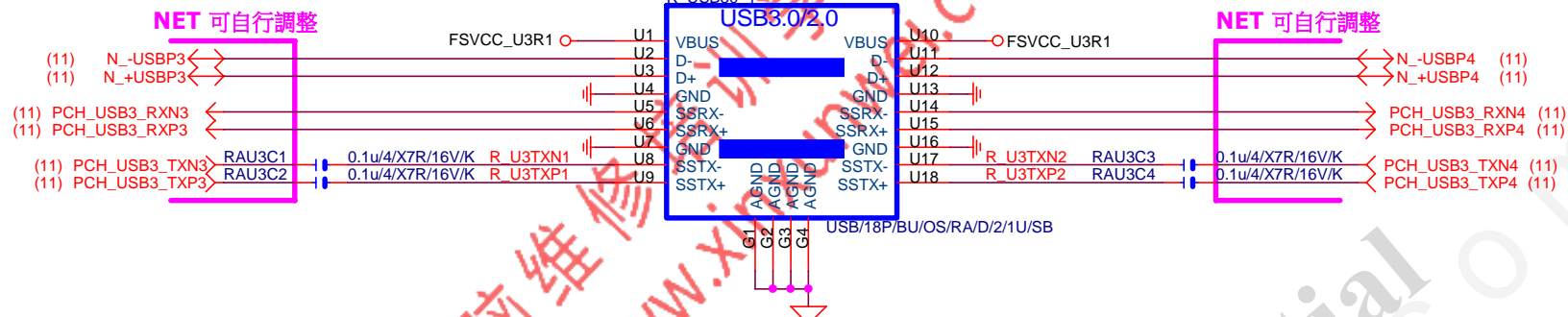
## VGA ESD



Gigabyte Technology

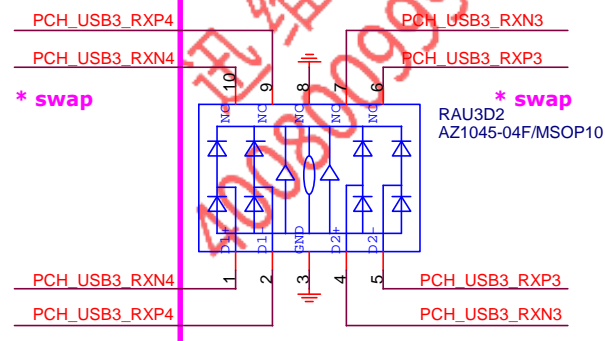
NXP-PTN3356

Title				<b>NXP-PTN3356</b>			
Size		Document Number		<b>GA-B150M-D2VX-SI</b>		Rev	
Custom						1.01	
Date: Thursday, January 07, 2016				Sheet 35 of 50			

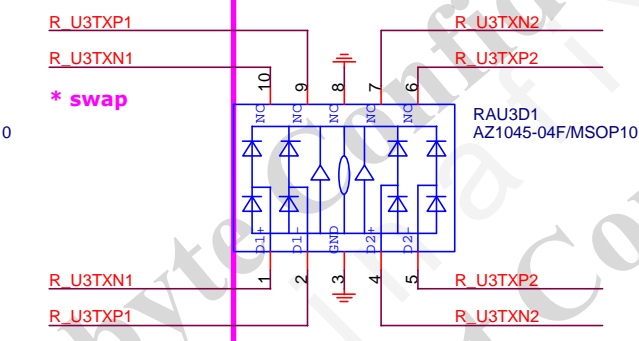


## ESD

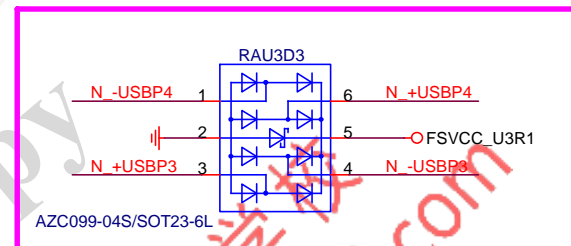
NET 可自行調整



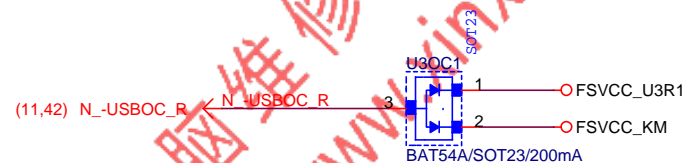
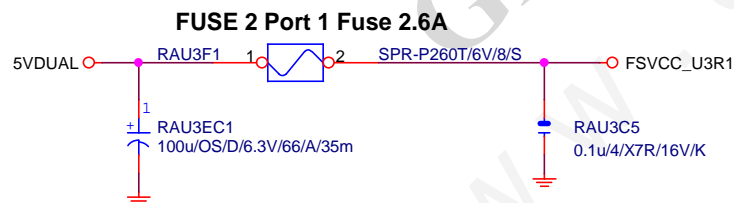
NET 可自行調整



NET 可自行調整



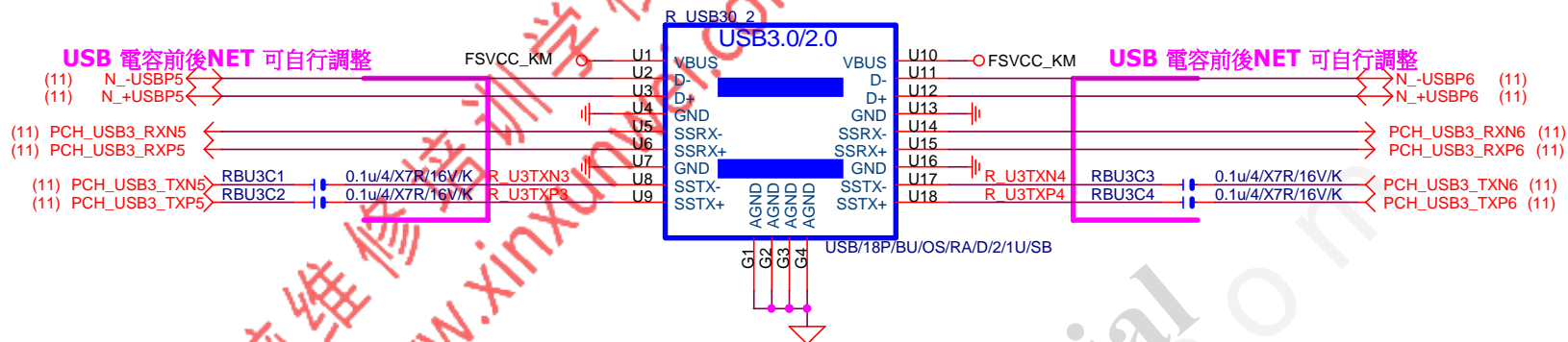
## FUSE



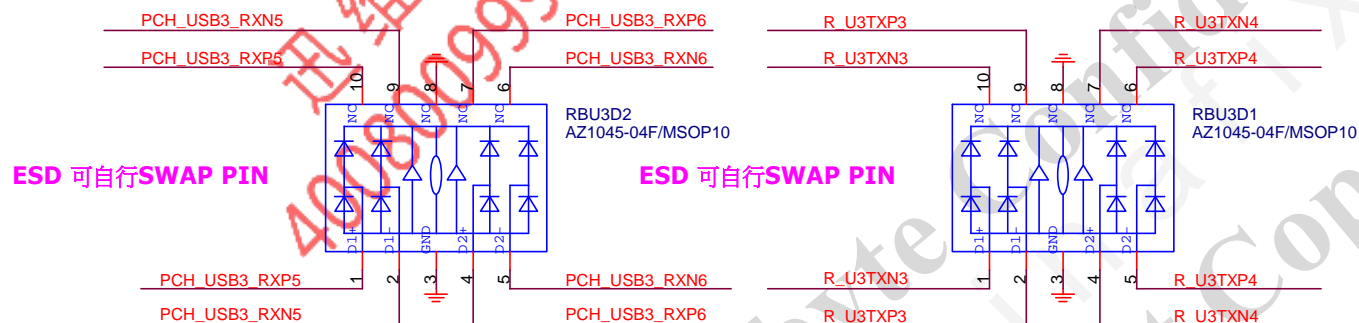
Gigabyte Technology

Title		R_USB30,USB_OC	
Size	Document Number	GA-B150M-D2VX-S1.01	
Custom			
Date:	Thursday, January 07, 2016	Sheet	36 of 50

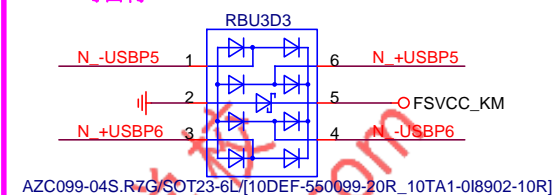




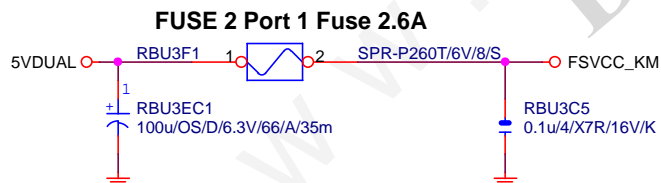
## ESD



## ESD 可自行SWAP PIN



## FUSE



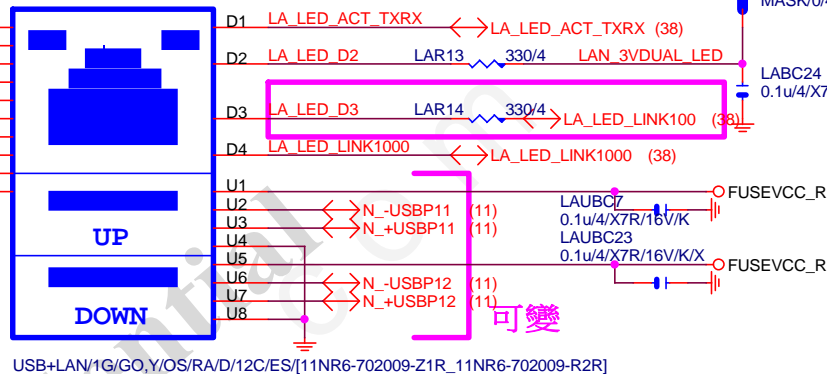
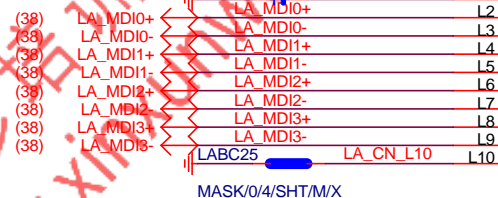
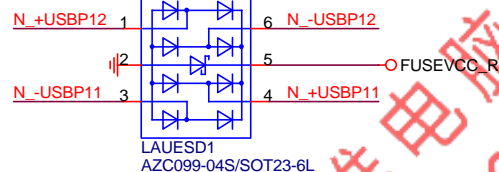
Gigabyte Technology

Title		R_USB30,USB_OC	
Size	Document Number	GA-B150M-D2VX-S1.01	
Custom			
Date:	Thursday, January 07, 2016	Sheet	37 of 50



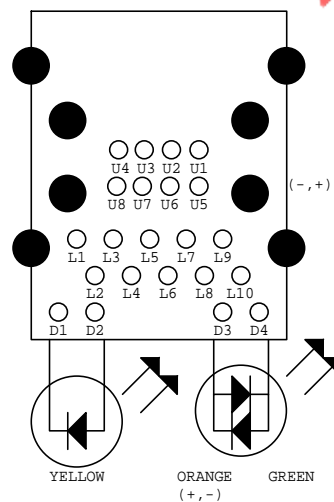
note:可變更USB NAME

## 可變

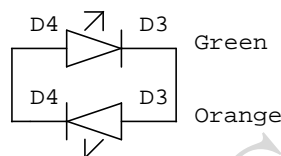


LA MDI-->100歐姆:[20/4/8/4/20]

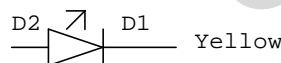
### USB\_LAN LAYOUT示意圖



Dual Color LED



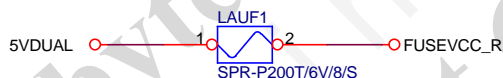
Single Color LED



## USB POWER

note:可變更FUSE

可變



## Close to connector

USB LAN 2-Port 2.0A

**FUSE-0805**

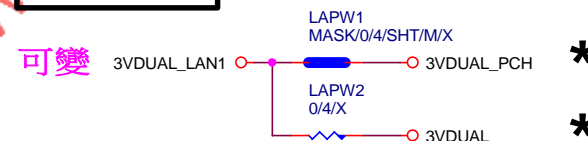
## EMI SHORT PAD

PS:視EMI需求



## LAN POWER

note: lan power連接及電流



## Gigabyte Technology

## LAN CONNECTOR-RTL8111G

Size	Document Number
Custom	

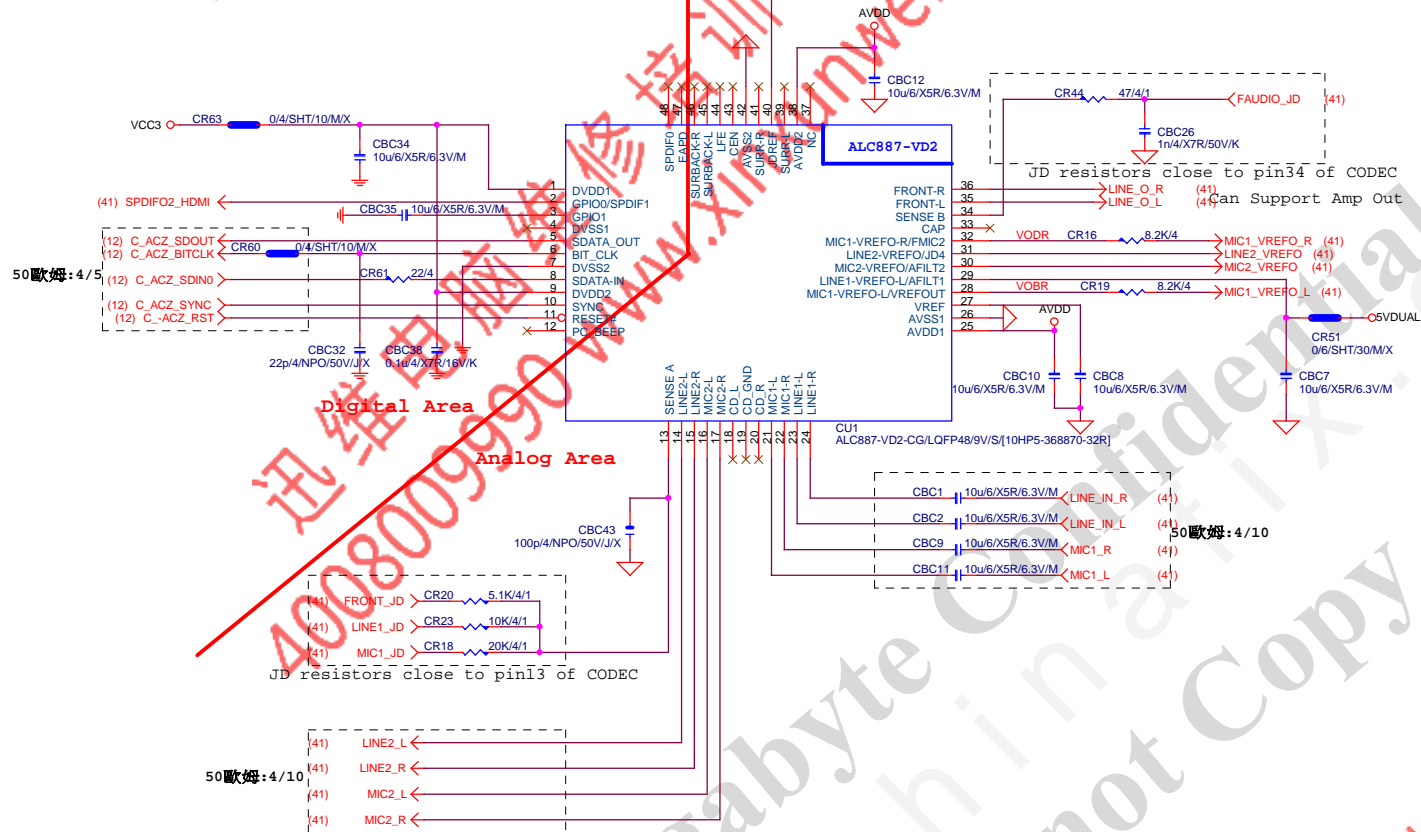
GA-B150M-D2VX-SI

Rev	1.01
-----	------

Date: Thursday, January 07, 2016

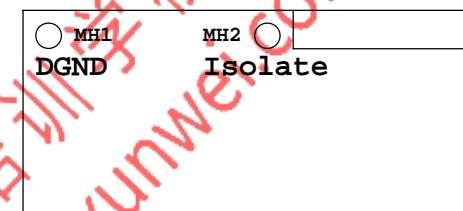
Sheet 39 of 50

## ALC887 三孔 AUDIO JACK

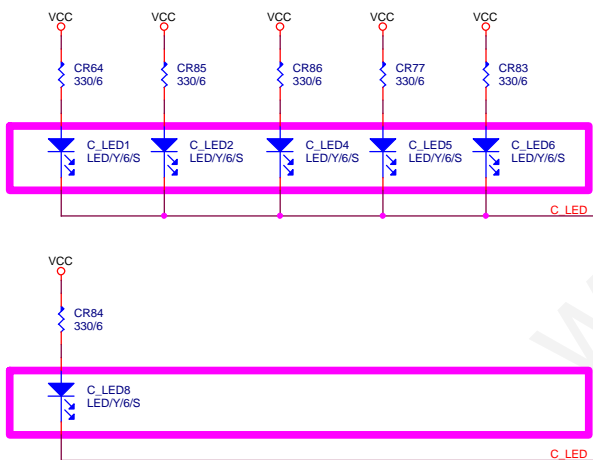


## LAYOUT注意:螺絲孔下GND方式

1. MH1空間夠,下DGND  
空間不夠,改為Isolate
2. MH2一律改為Isolate



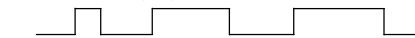
VALUE可變,LED顏色請自行修改  
(預設:低亮度黃色LED:LED/Y/6/S)



BOM OPTION : 1. Chemicon 音效電容  
2. 金屬外罩 Reserve (上件與否, 依照各Model spec)  
3. LED Reserve (上件與否和LED顏色, 依照各Model spec)


LAYOUT注意:要加

## GND切割線



## 音效區域印刷

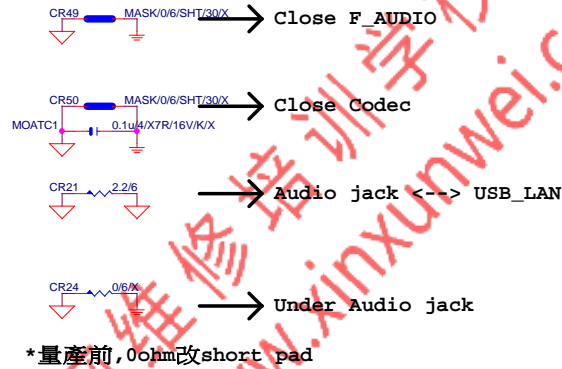


			
Title <b>HD AUDIO ALC887</b>			
Size	Document Number	Rev	
Custom	<b>GA-B150M-D2VX-SI</b>	<b>1.0</b>	
Date:	Thursday, January 07, 2016	Sheet	40 of 50

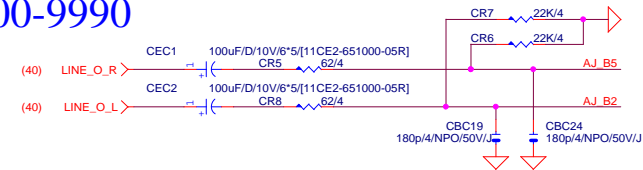


Rev 0.5

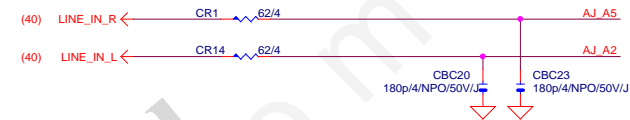
www.xinxunwei.com 400-800-9990



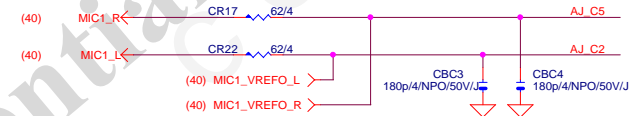
LINE-OUT



LINE-IN



MIC-IN

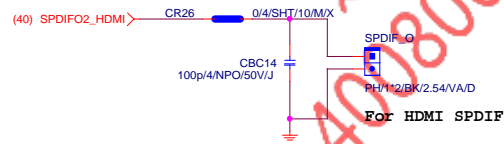


SURROUND

CEN/LFE

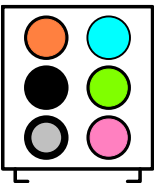
SURRBACK

SPDIF\_OUT

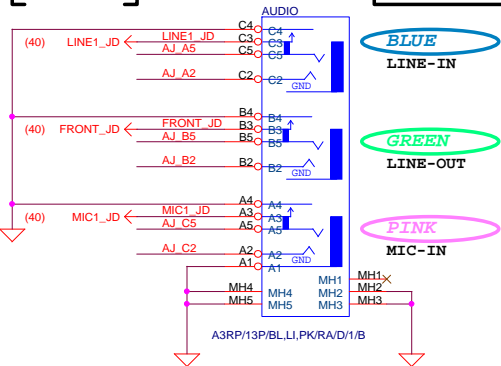


SPDIF\_IN

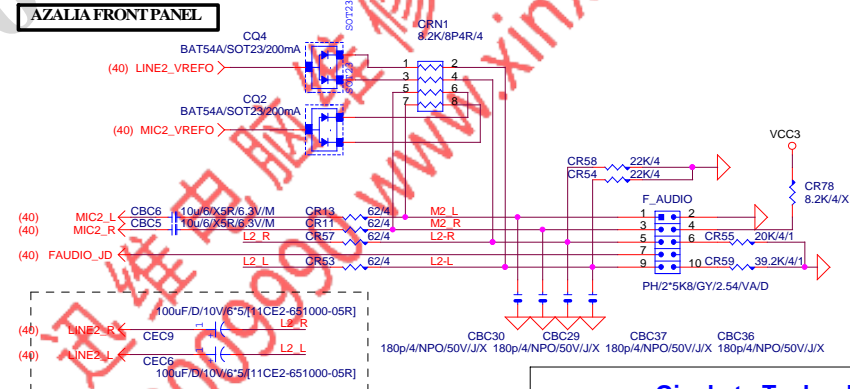
AZALIA JACK



AZALIA JACK



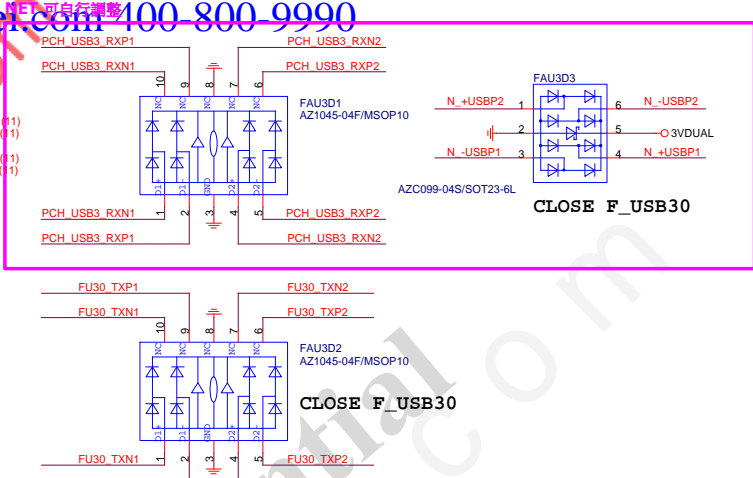
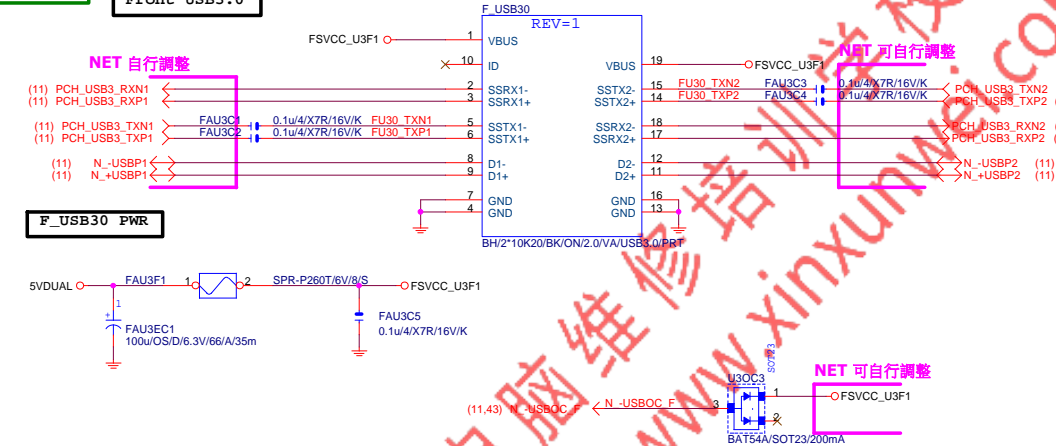
AZALIA FRONT PANEL



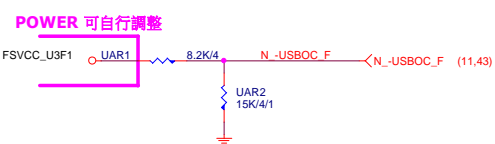
Gigabyte Technology

Title			
AUDIO JACK			
Size	Document Number	GA-B150M-D2VX-SI	Rev
Custom			1.01
Date:	Thursday, January 07, 2016	Sheet	41 of 50

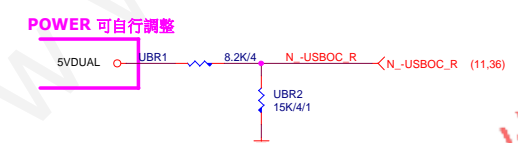
Front USB3.0



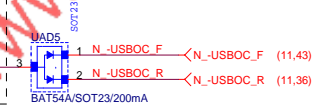
-USBOC\_F



-USBOC\_R



\* 接 PCH N\_GPP\_B21  
PCH PU\_3Vdual  
(12) N\_GPP\_B20



FUSE 4081

FUSE 2A  
FRONT USB1

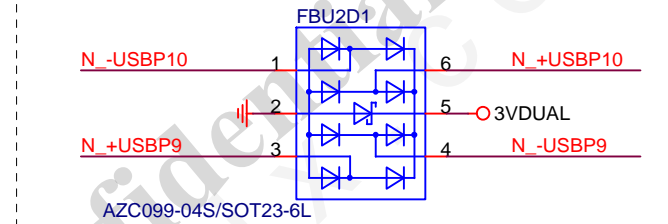
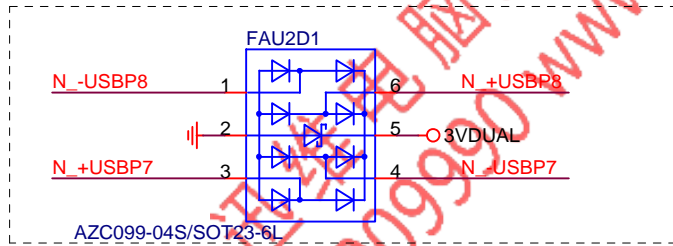
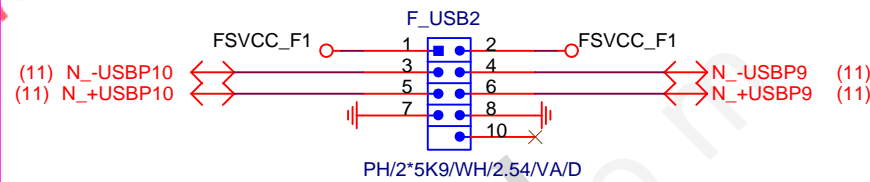
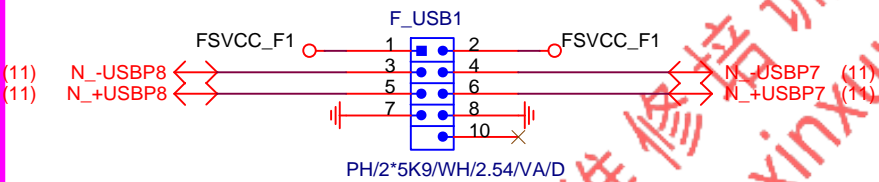
FRONT USB2

NET 可變

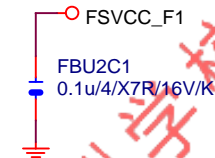
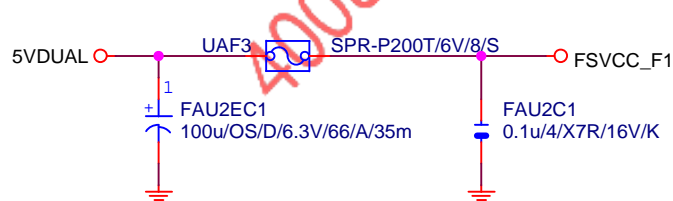
FUSB2X5-HS

NET 可變

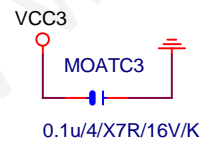
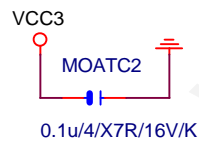
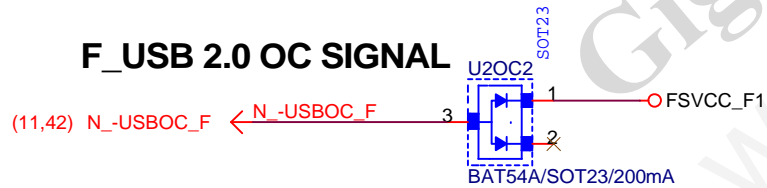
FUSB2X5-HS



Close to connector

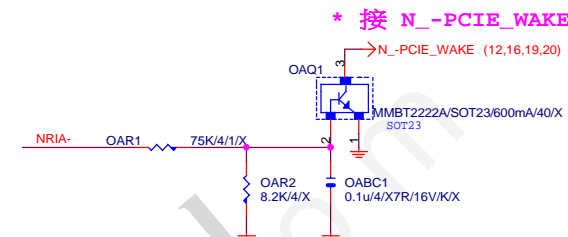


F\_USB 2.0 OC SIGNAL

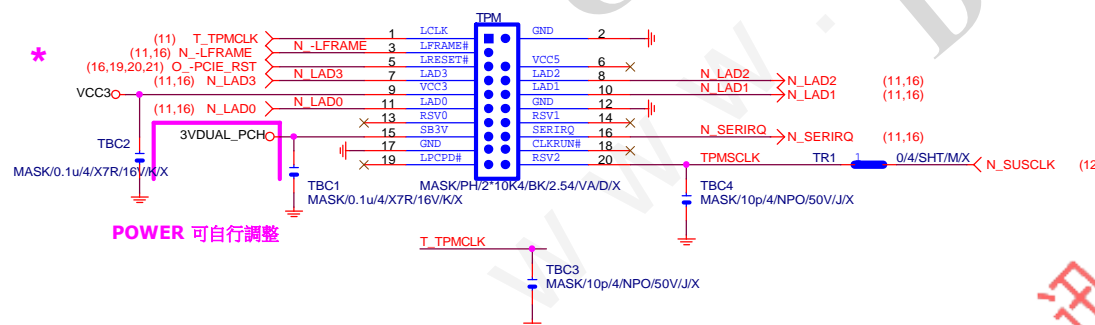


Gigabyte Technology

Title		USB2.0	
Size A	Document Number	GA-B150M-D2VX-S	
Date:	Thursday, January 07, 2016	Sheet	43 of 50
		Rev	1.01



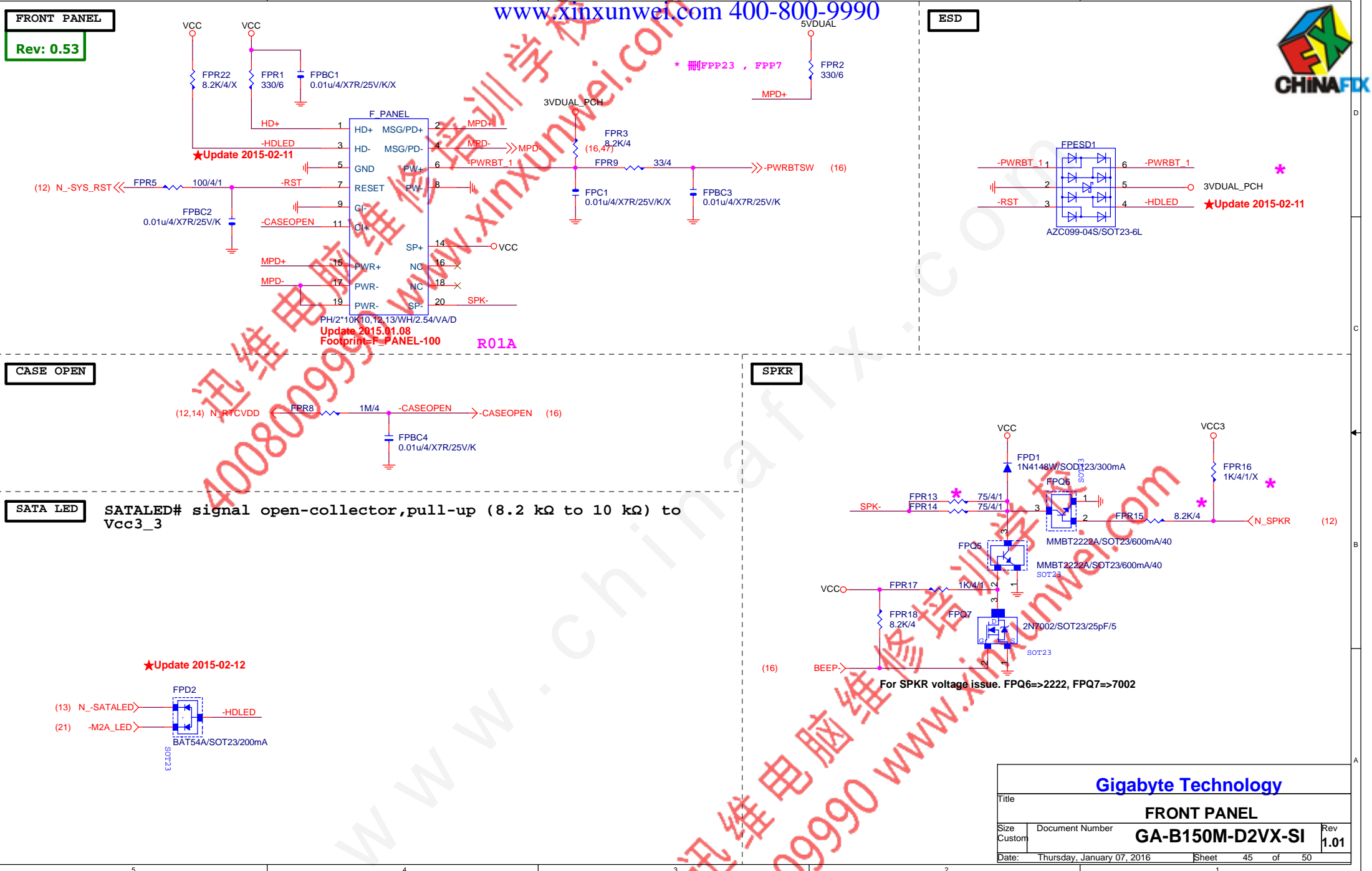
## TPM CONNECT



## Thunderbolt (N/A)

<b>Gigabyte Technology</b>				
Title				
<b>FP,F_USB,USB PWR,BZ</b>				
Size	Document Number			Rev
Custom	<b>GA-B150M-D2VX-S</b>			<b>1.0</b>
Date:	Thursday, January 07, 2016		Sheet	44 of 50





Gigabyte Technology			
Title			
FRONT PANEL			
Size	Document Number	Rev	
Custom	GA-B150M-D2VX-SI	1.01	
Date:	Thursday, January 07, 2016	Sheet	45 of 50

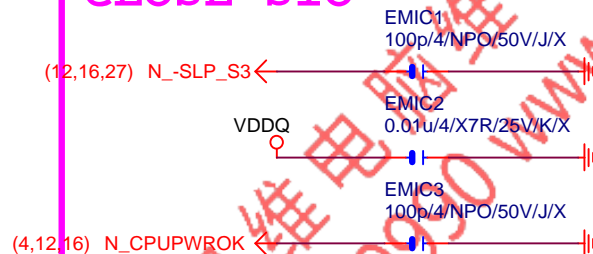
OVER VOLTAGE



NCT3933	0X2A	0X20	0X22
VREF1	DDRVTT	VREF_DDRA_DQ	PCH Core
VREF2	VREF_DDRA_CA	N/A	VCC1_5_PCH
VREF3	VREF_DDRA_CA	VREF_DDRB_DQ	SMREF

Gigabyte Technology		
Title		
CPU CORE VR-2		
Size	Document Number	Rev
Custom	GA-B150M-D2VX-SI	1.01
Date:	Thursday, January 07, 2016	Sheet 46 of 50

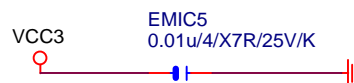
## CLOSE SIO



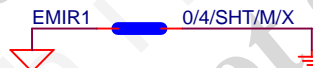
## CLOSE PCH



## close to PCH (NR17)



## R\_USB30\_2 &amp; DVI 之間



## close to FRONT PANEL

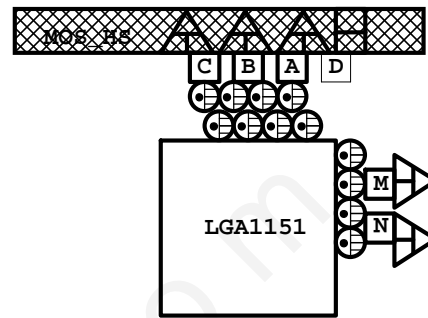
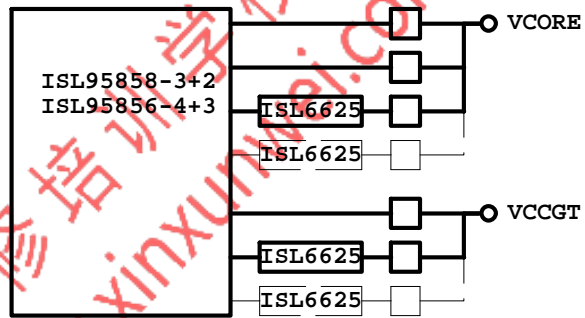
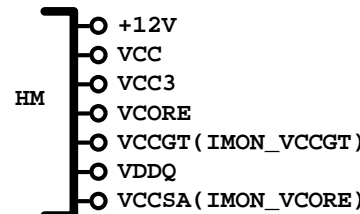
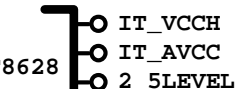
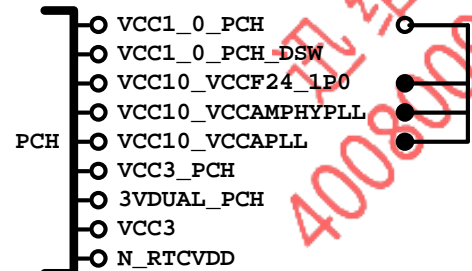
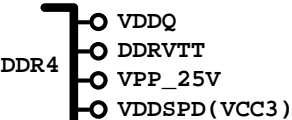
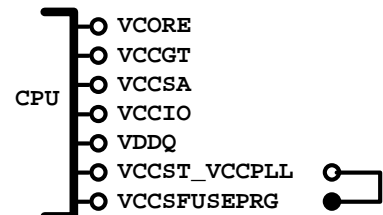
**GIGABYTE™**

Title <b>EMI/ESD</b>		
Size A	Document Number <b>GA-B150M-D2VX-SI</b>	Rev <b>1.01</b>
Date:	Thursday, January 07, 2016	Sheet 47 of 50

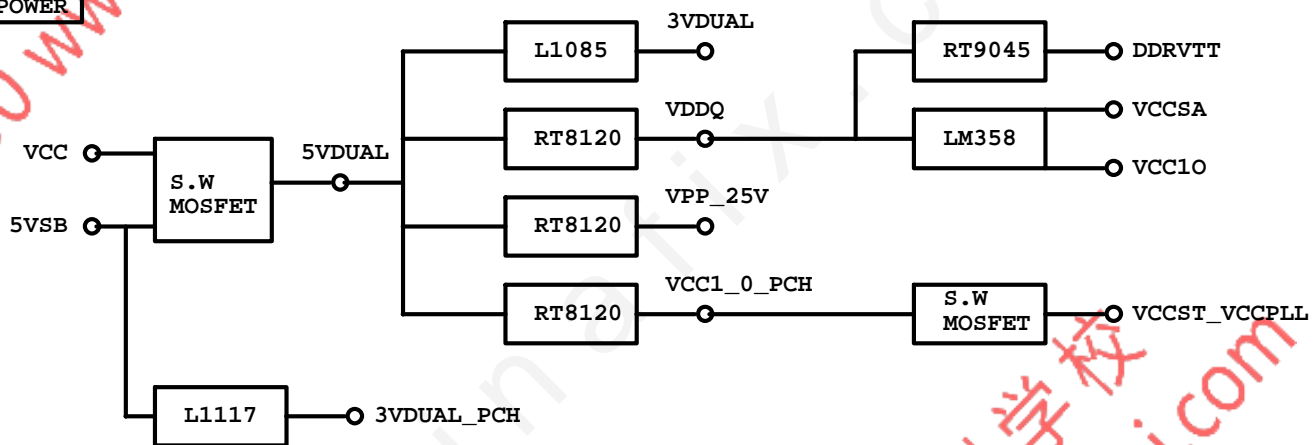
## POWER BLOCK MAP

## VCORE/VCCGT

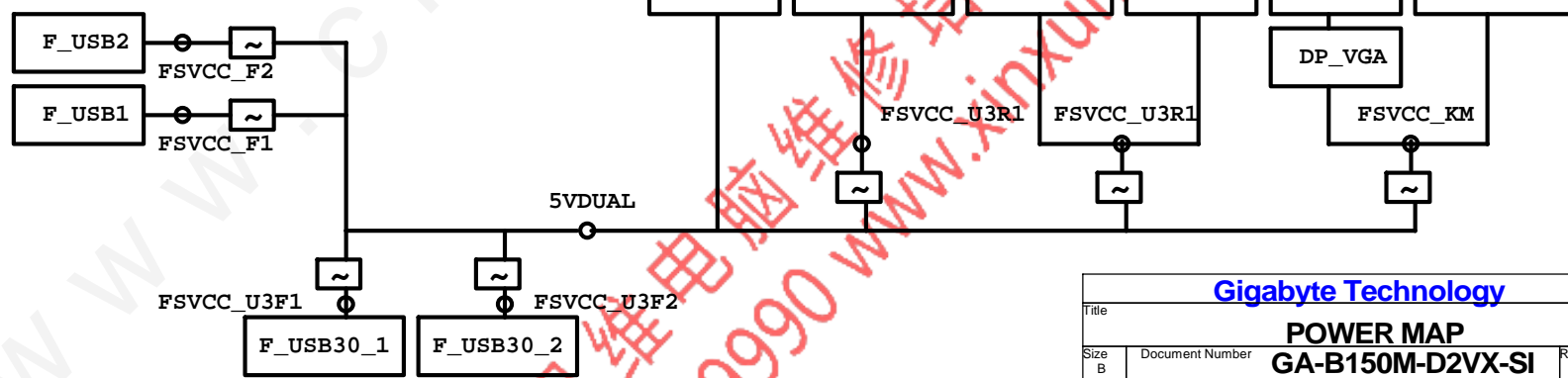
www.xinxunwei.com 400-800-9990



## POWER



## FUSE POWER F/R



Gigabyte Technology

Title			
POWER MAP			
Size	Document Number	GA-B150M-D2VX-SI	Rev
B			1.01
Date:	Thursday, January 07, 2016	Sheet	48 of 50



## 固態電容料號.請自行修改

日系黑色固態	Capture Value
11C02-C85600-01R	560u/FP/D/6.3V/68/C/8m
11C05-C82700-01R	270u/FP/D/16V/88/C/12m
11C05-C61000-01R	100u/OS/D/16V/66/C/30m
11C02-C51000-01R	100u/FP/D/6.3V/65/C/13m

日系一般固態	Capture Value
11C02-685600-01R	560u/FP/D/6.3V/68/8m
11C05-882700-01R	270u/FP/D/16V/88/12m
11C05-661000-03R	100u/OS/D/16V/66/30m
11C02-651000-02R	100u/OS/D/6.3V/66/30m

台系固態	Capture Value
11C02-661000-09R	100u/OS/D/6.3V/66/A/35m
11C05-691000-09R	100u/OS/D/16V/69/A/35m
11C05-8C2700-09R	270u/FP/D/16V/8C/A/10m
11C02-695600-09R	560u/FP/D/6.3V/69/A/11m

## IRON CHOKE

	料號	Capture Value	SIZE	Footprint
DIP	11LC5-M4500C-01R	0.5uH/40A/IMD109/M/D	10*10	CHOKE05U-40A-1PQ-3
DIP	11LC5-M2500C-01R	0.5uH/20A/IMD0809/M/D	8*8	CHOKE1U-R50M-IF

## Ferrite

	料號	Capture Value	SIZE	Footprint
DIP	11LC5-F3500C-11R	0.5uH/32A/INCG109/FSI/D	10*10	CHOKE05U-40A-1PQ-3
DIP	11LC5-F2500C-11R	0.5uH/25A/INC0809/F/D	8*8	CHOKE1U-R50M-IF
SMD	未建(SIUC1007-R30M-JJ1W)		10*7	CHOKE11X8MM-SMD

## BEAD

	料號	Capture Value	SIZE	Footprint
DIP	10LFB-15470A-01R	47/4030/15A/S	4*3	BEADC8B-BPH_SMD

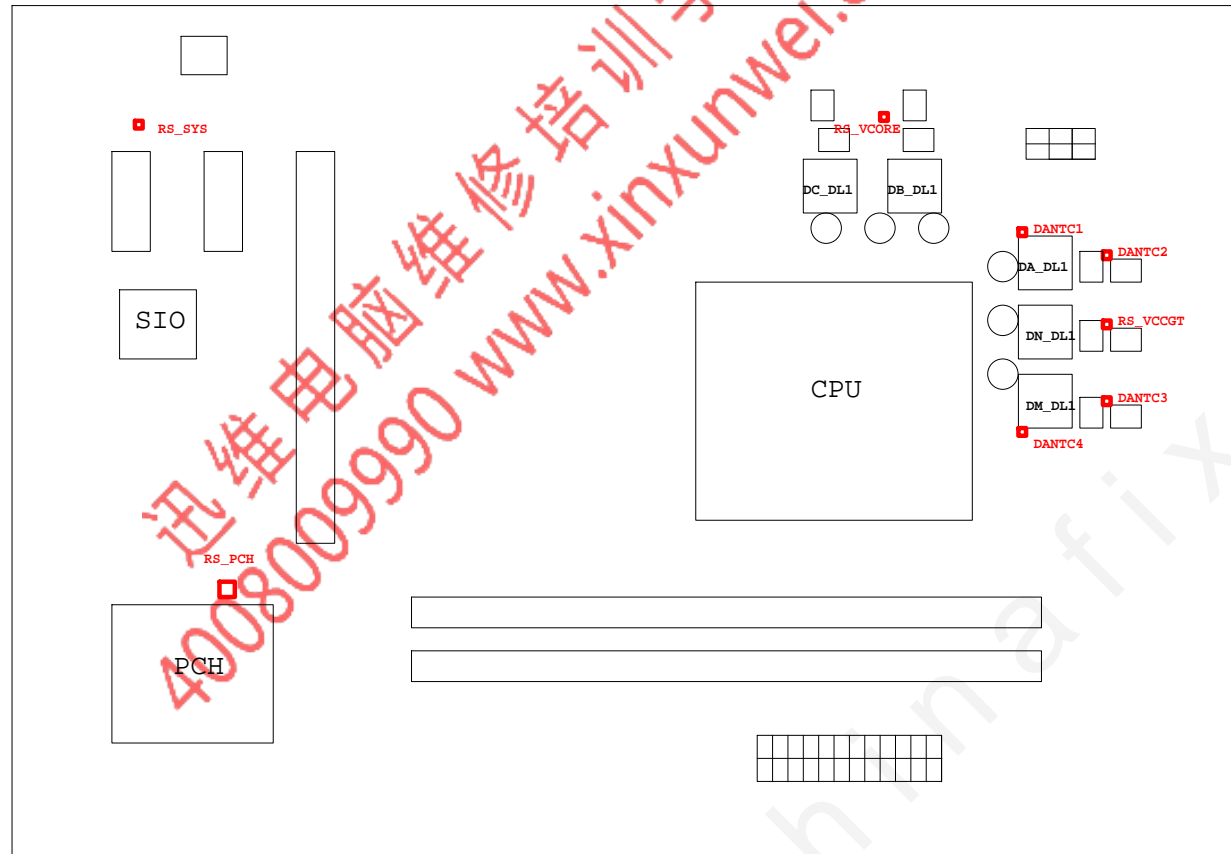
## PWM料號

		料號	Capture Value	Footprint
PWM	ISL95856	10TA1-695856-01R		IC52QFN-6x6-G
PWM	ISL95858	10TA1-695858-01R		IC52QFN-6x6-G
PWM	IR35201	10TA1-635201-00R		IC56QFN-9VRS4339
PWM	IR3570	10TA1-603570-00R		IC40MLFP-ISL95835

# GIGABYTE™

Title	RT8120_DDR4 POWER		
Size	Document Number	Rev	
Custom	GA-B150M-D2VX-SI	1.01	
Date:	Thursday, January 07, 2016	Sheet	49 of 50





熱敏電阻	擺放靠近位置	走線方式
DANTC4	DM_DL1	Differential
DANTC1	DA_DL1	Differential
DANTC3	DM_DQ1	Differential
DANTC2	DA_DQ1	Differential
RS_VCORE	DC_DQ1	N/A
RS_VCCGT	DM_DQ1	N/A
RS_PCH	PCH	N/A
RS_SYS	CU1	N/A